

CITY COMMISSION UPDATE

CONTENTS

1 - EXISTING CONTEXT

2 - MACRO SITE PLAN

3 - SITE PLAN

4 - 5 FIRST FLOOR PLAN

6 - SECOND FLOOR PLAN

7 - CITY COMMISSION CHAMBERS (ENLARGED FLOOR PLAN)

**8 - CITY COMMISSION CHAMBERS (ENLARGED FLOOR PLAN
W/ OVERFLOW)**

9 - SECTION @ COMMISSIONER'S MEETING ROOM

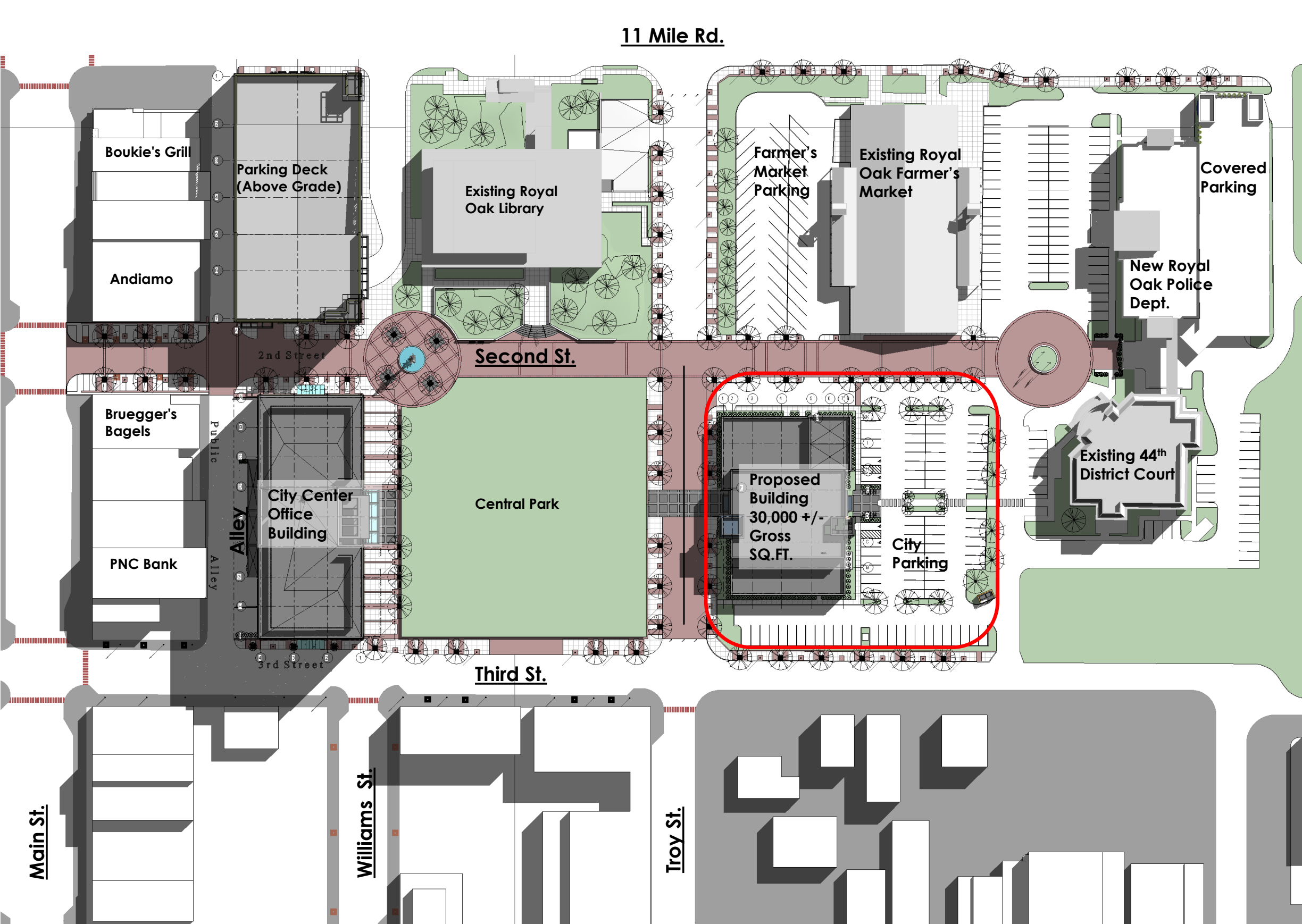
10 - EXTERIOR LOOK (DISCUSSION)



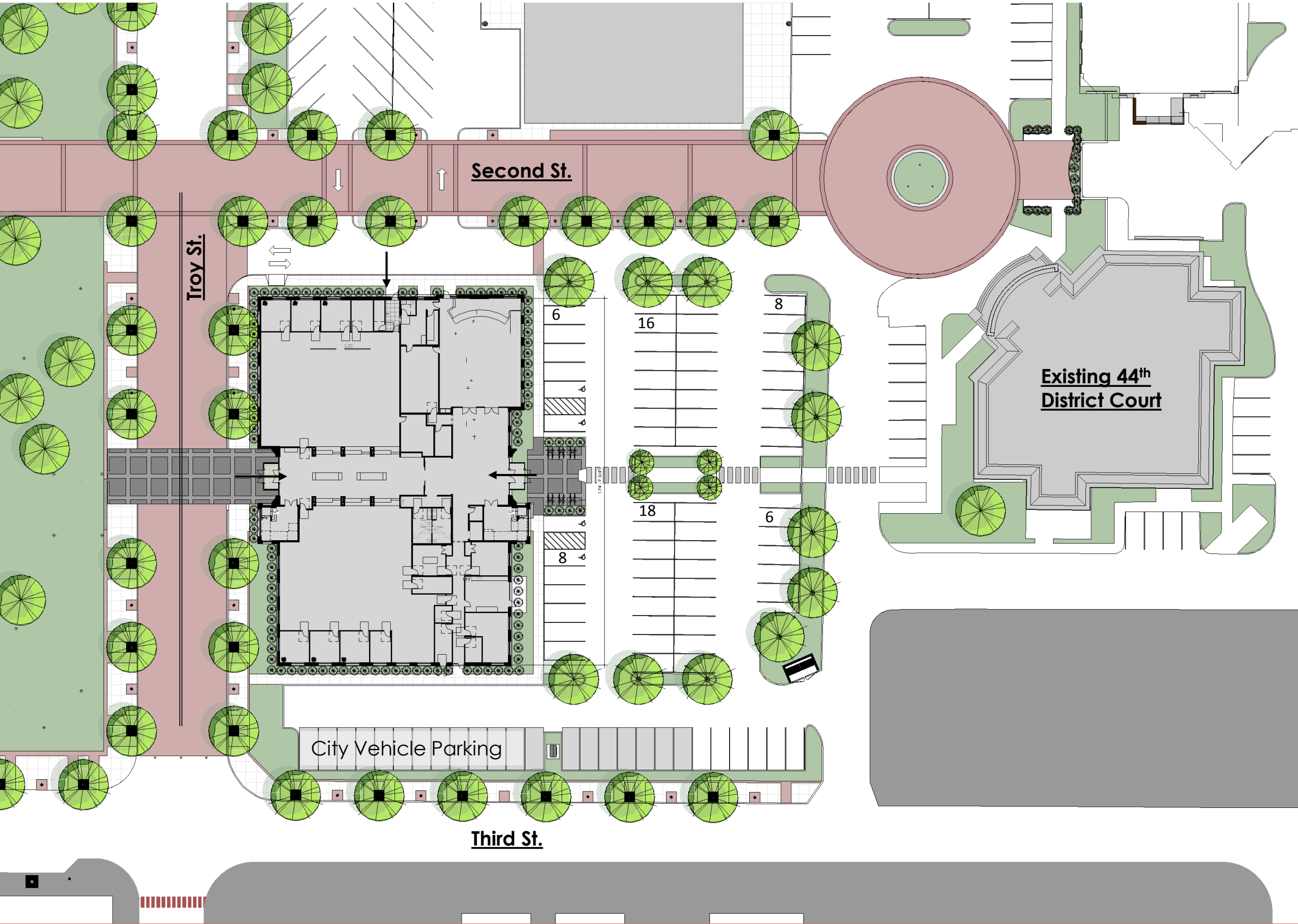
Alternate City Hall Locations

1. Directly West of the Court
2. Neighboring Lots
3. Next to or on top of the library
4. In the parking deck on 11 Mile
5. On Troy Street, across from the Park

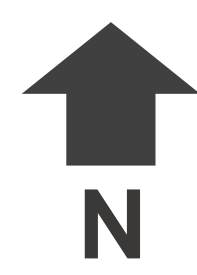


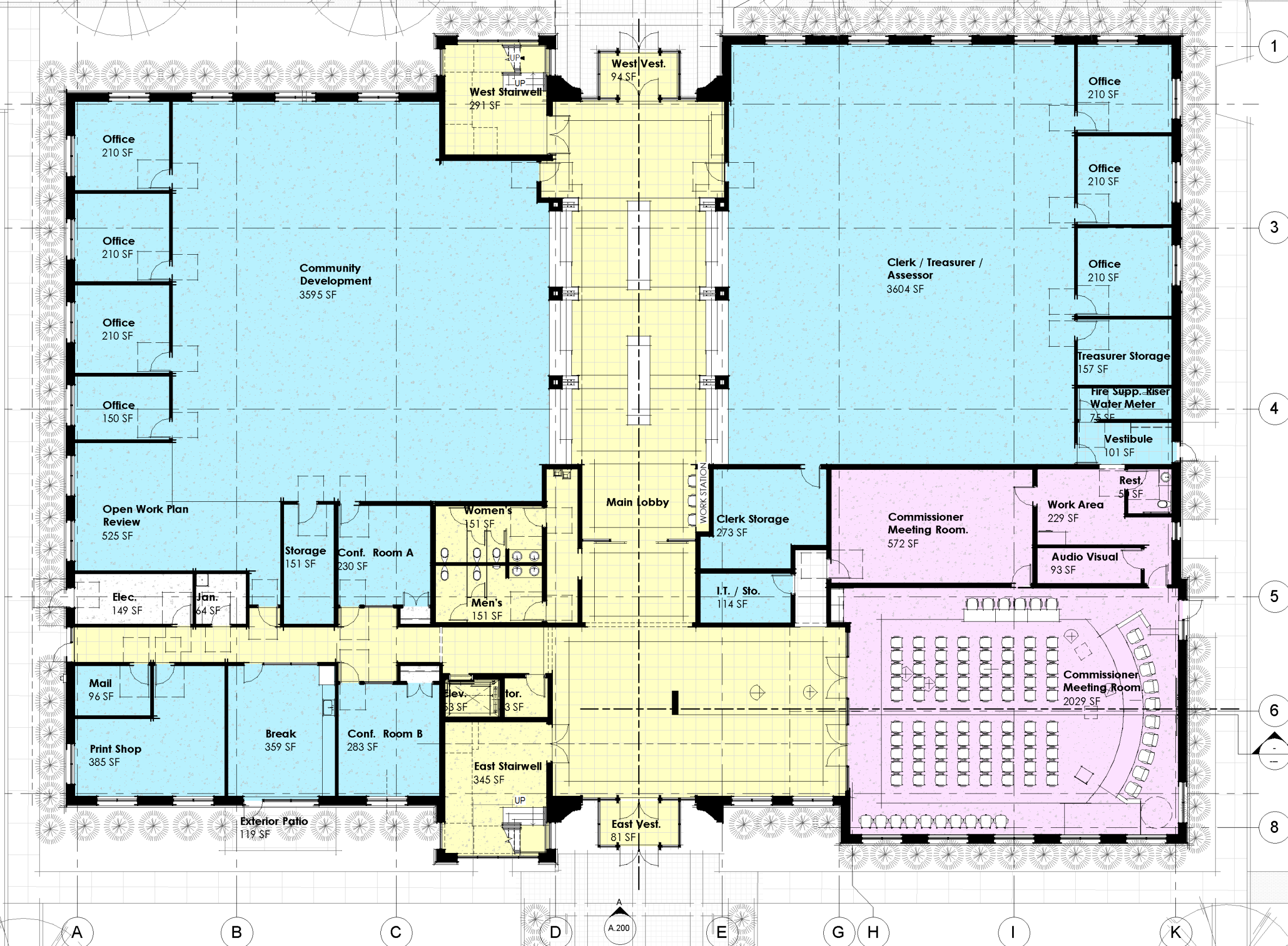


1. Prominent position on Central Park
2. Completes the enclosure of the park. (bound on all sides)
3. Takes advantage of the parking lot to the east
4. Creates a Civic campus
5. Does not need to be next to court as daily activities do not co-mingle
6. Close proximity to the new parking deck on 11 mile

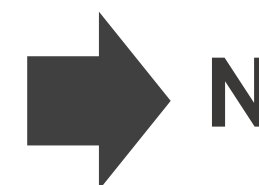


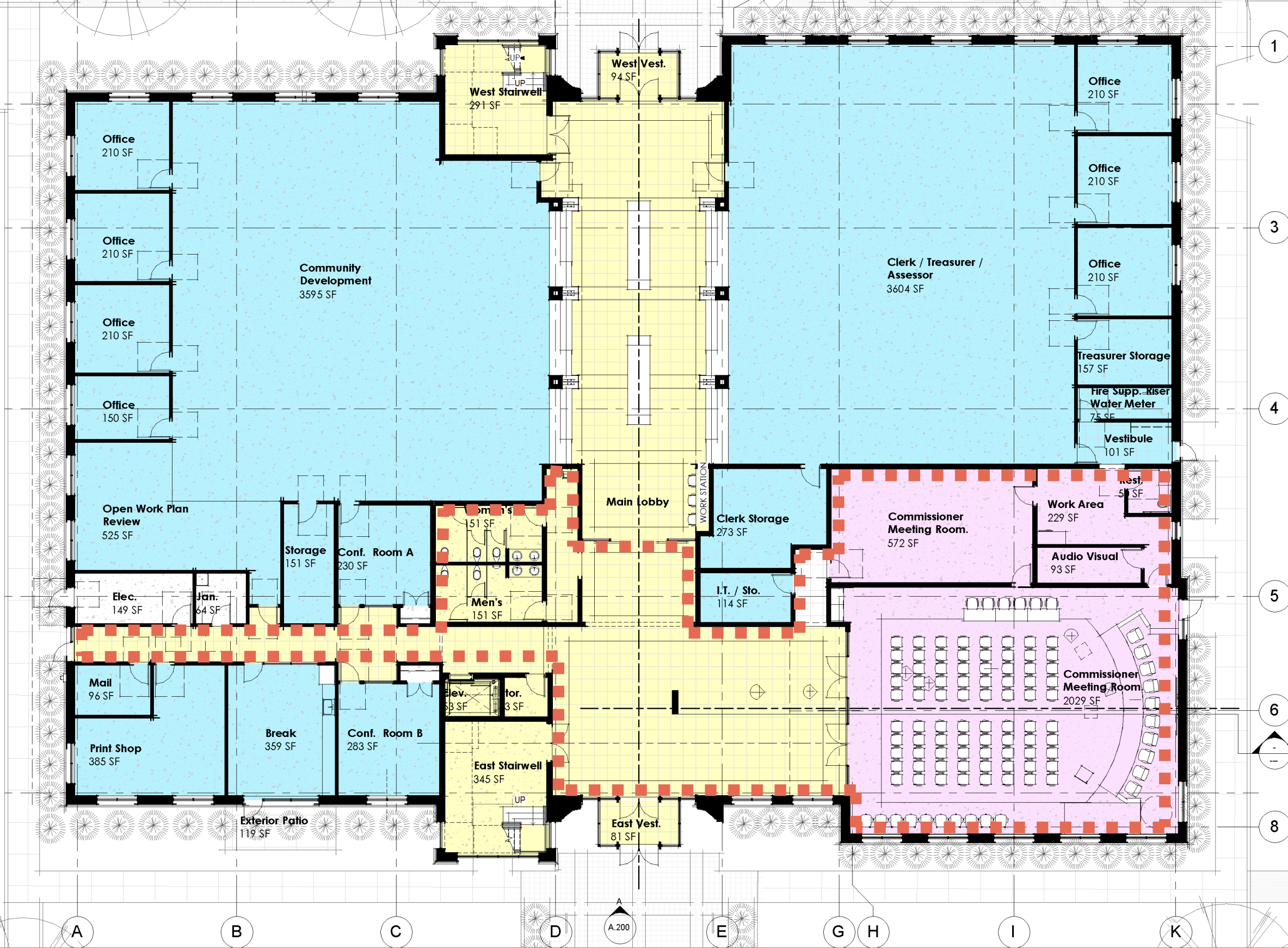
1. 68 parking spaces
2. 20 city vehicle parking spaces convenient employee entrance
3. Continue streetscape and walks around the building to strengthen pedestrian connectivity
4. Floor plan orients itself on the site optimally to take advantage of parking
5. 2 Main Entrances to the Building



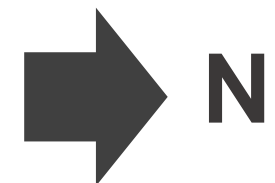


1. Central spine to accommodate 2 main entrance points
2. Most frequently visited spaces on ground floor
3. Main vertical circulation and Commission Chambers located along east side near parking.
4. Optimize circulation by doubling as overflow for public meetings
5. Improved commission chambers amenities
6. Strategic location for deliveries, break and employee entrance
7. Can isolate visitors during evening events from the rest of City Hall



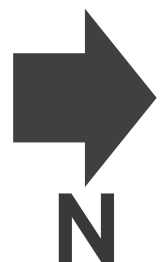


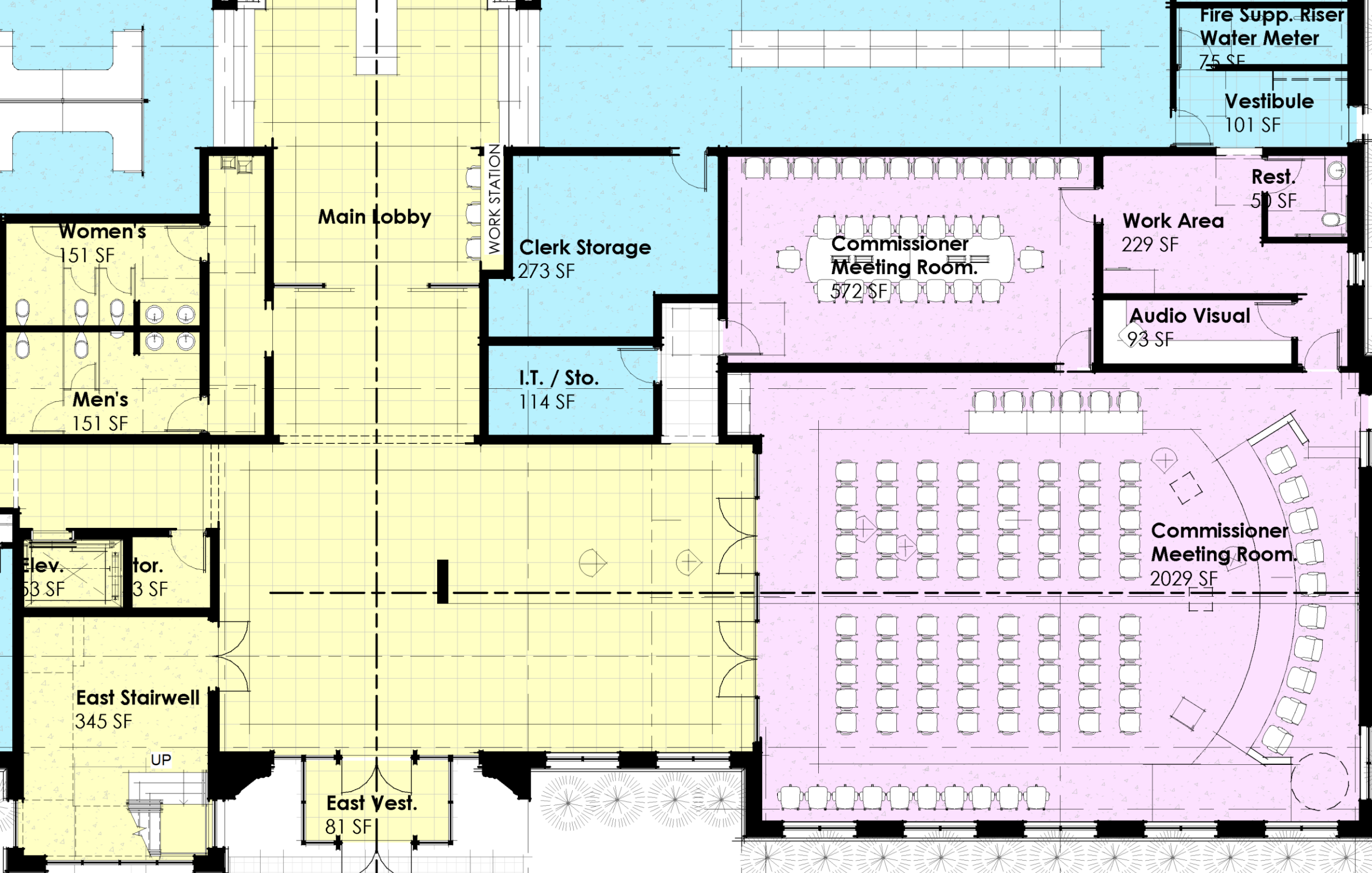
1. Central spine to accommodate 2 main entrance points
2. Most frequently visited spaces on ground floor
3. Main vertical circulation and Commission Chambers located along east side near parking.
4. Optimize circulation by doubling as overflow for public meetings
5. Improved commission chambers amenities
6. Strategic location for deliveries, break and employee entrance
7. Can isolate visitors during evening events from the rest of City Hall





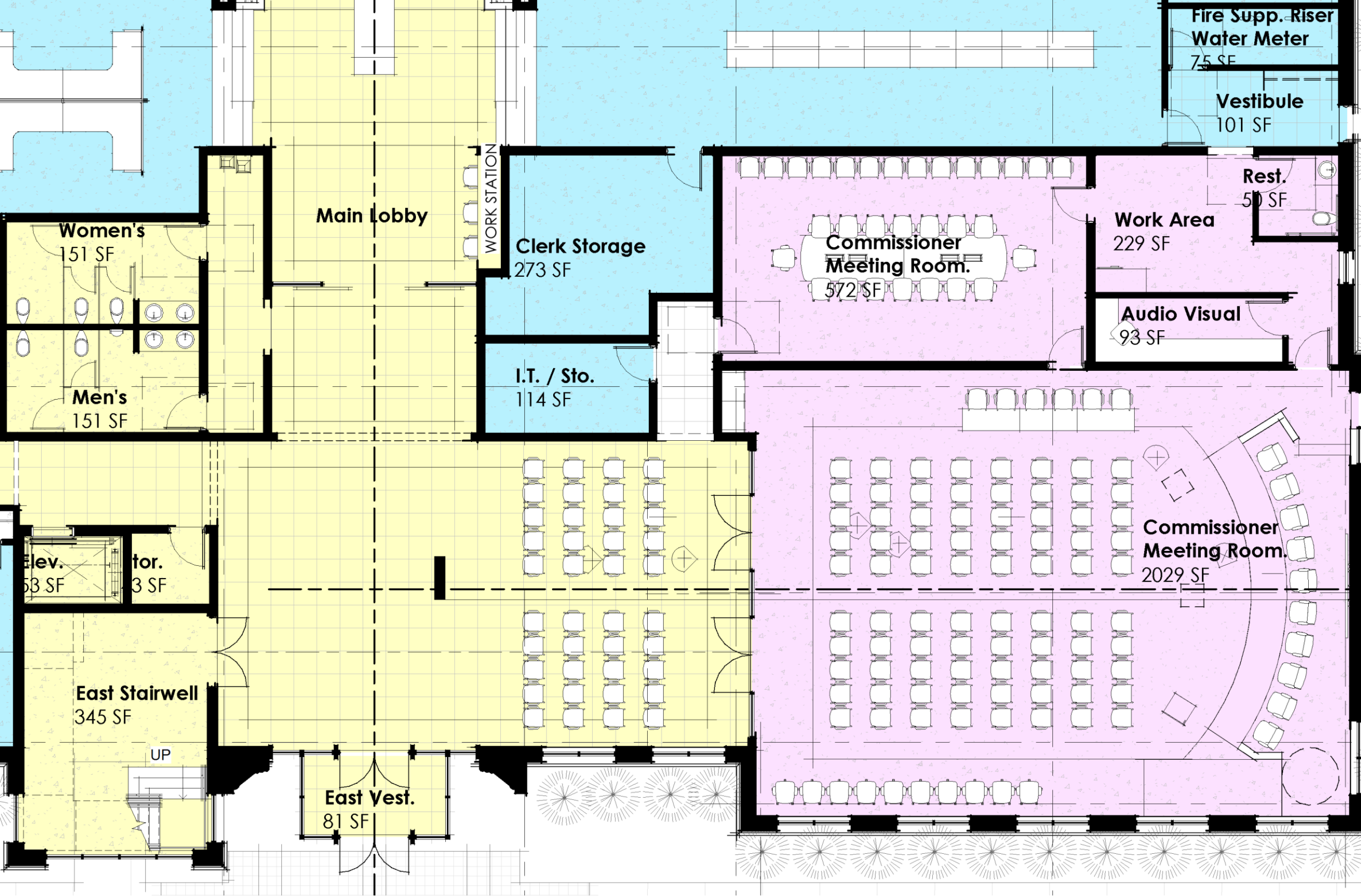
1. Ability to partition off certain departments that need more security
2. Ability to optimize adjacencies



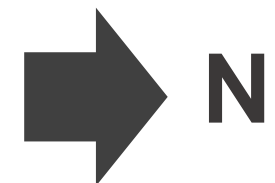


1. Raised Dais (focal point)
2. City Staff seated conveniently on the side
3. Audio Visual room located adjacent to the Commission Chambers
4. Work / Flex space
5. Remote private restroom
6. Private Commissioner Meeting Chamber
7. 18'-0" ceilings to optimize sightlines
8. Multiple podium locations
9. Secured Commissioner entrance
10. 90 seats with up to 40 overflow





1. Raised Dais (focal point)
2. City Staff seated conveniently on the side
3. Audio Visual room located adjacent to the Commission Chambers
4. Work / Flex space
5. Remote private restroom
6. Private Commissioner Meeting Chamber
7. 18'-0" ceilings to optimize sightlines
8. Multiple podium locations
9. Secured Commissioner entrance
10. 90 seats with up to 40 overflow



1. 18'-0" high ceilings
2. Extra height for better visual electronics
3. Raised Dais

