

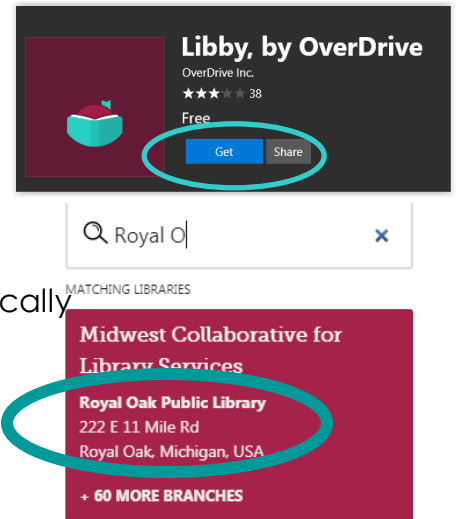
## Get Libby, the new OverDrive app!

Libby is Overdrive's new and improved app for borrowing and downloading eBooks and eAudiobooks onto most smartphone and tablet devices. Libby can be used simultaneously with the OverDrive app. However, Libby will eventually replace the OverDrive app.

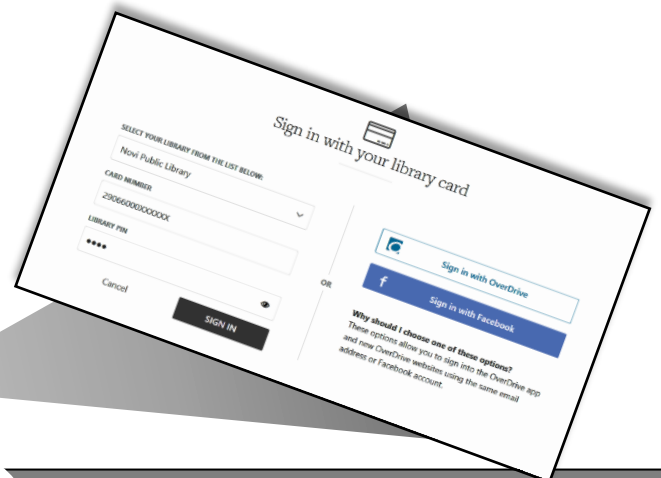
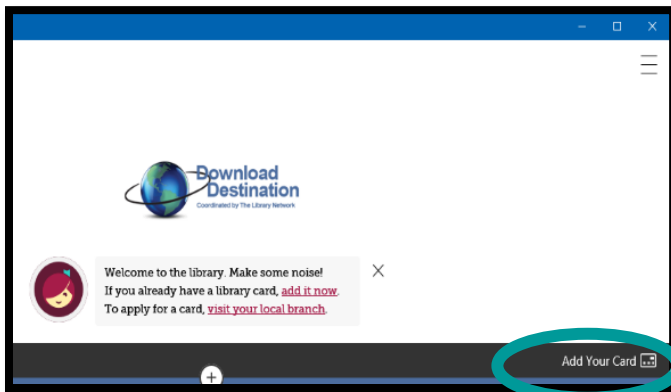
**Please note**, Libby is currently NOT available for Amazon's Kindle Fire, but Kindle ebooks can still be checked out in Libby if it's installed on another compatible device. You can set preferences to indicate that you "read books on my Kindle" so when you check out an e-book, it will automatically select the Kindle format and send it to your Kindle device or Kindle app via Amazon.com, rather than downloading it to Libby.

**Install the free Libby app** by visiting your device's App Store (Apple), Play Store (Android), or Windows Store (Windows 8 and 10).

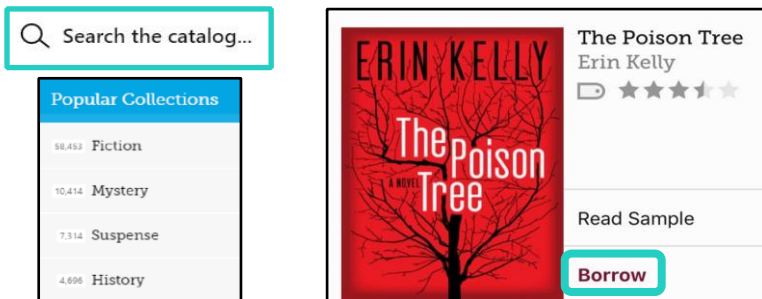
- Search for **Libby**. The app will display in the search results. Tap the **Install/Get** button.
- Tap **Hi!** to open the app.
- Tap on **Find My Library**, if your location doesn't automatically pop up, search for **Royal Oak** and select **Midwest Collaborative for Library Services**



- Tap **Add Your Card**, select library, and sign in with your library card and PIN.



Next, search for a title to check out. Search the catalog by typing in a title or author, or Scroll down to browse Popular Collections.

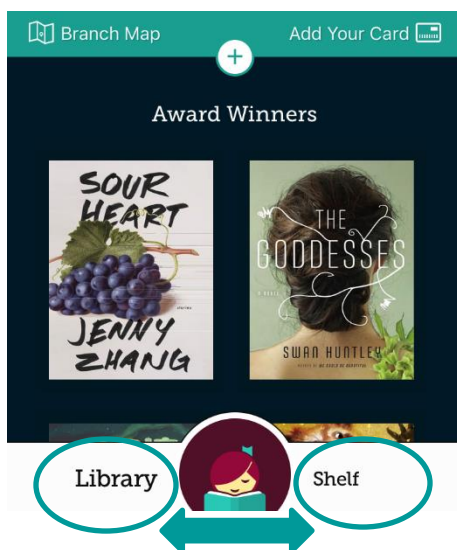
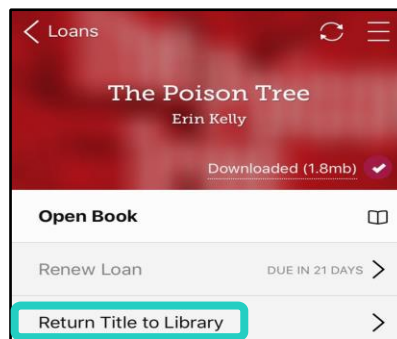
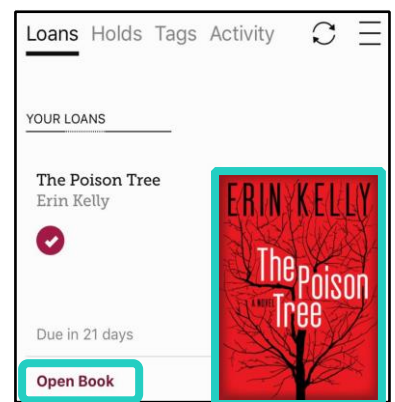
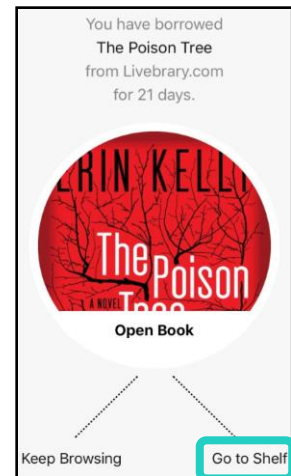


-When you find a title available to check out tap **Borrow**. If it is checked out, you can get on the waitlist by tapping **Place Hold**.

-Tap **Keep Browsing** to search for more titles, or tap **Go to Shelf** to view your checkouts.

-From the **Loans** page, tap **Open book** to begin reading. For more options, tap the book's cover.

-Ebooks and audiobooks will expire automatically at the end of the loan period. But if you wish to return the title early, go to **Loans**, tap on the bookcover image, and tap **Return Title to Library**.



Use the **Libby Button** at the bottom of the app to navigate back and forth between the **Library**, where you search and check out titles, and the **Shelf**, where you can view your loans and holds.