

# ROYAL OAK CENTENNIAL COMMONS

DOWNTOWN PARK TASK FORCE 90% PRESENTATION

AUGUST 27, 2020



# ROYAL OAK CENTENNIAL PARK

*DDA Presentation*

**1**

## ***OVERVIEW***

*Scope and Limits of Work*

**2**

## ***Hardscape***

**3**

## ***Lighting***

**4**

## ***Site Furnishings***

**5**

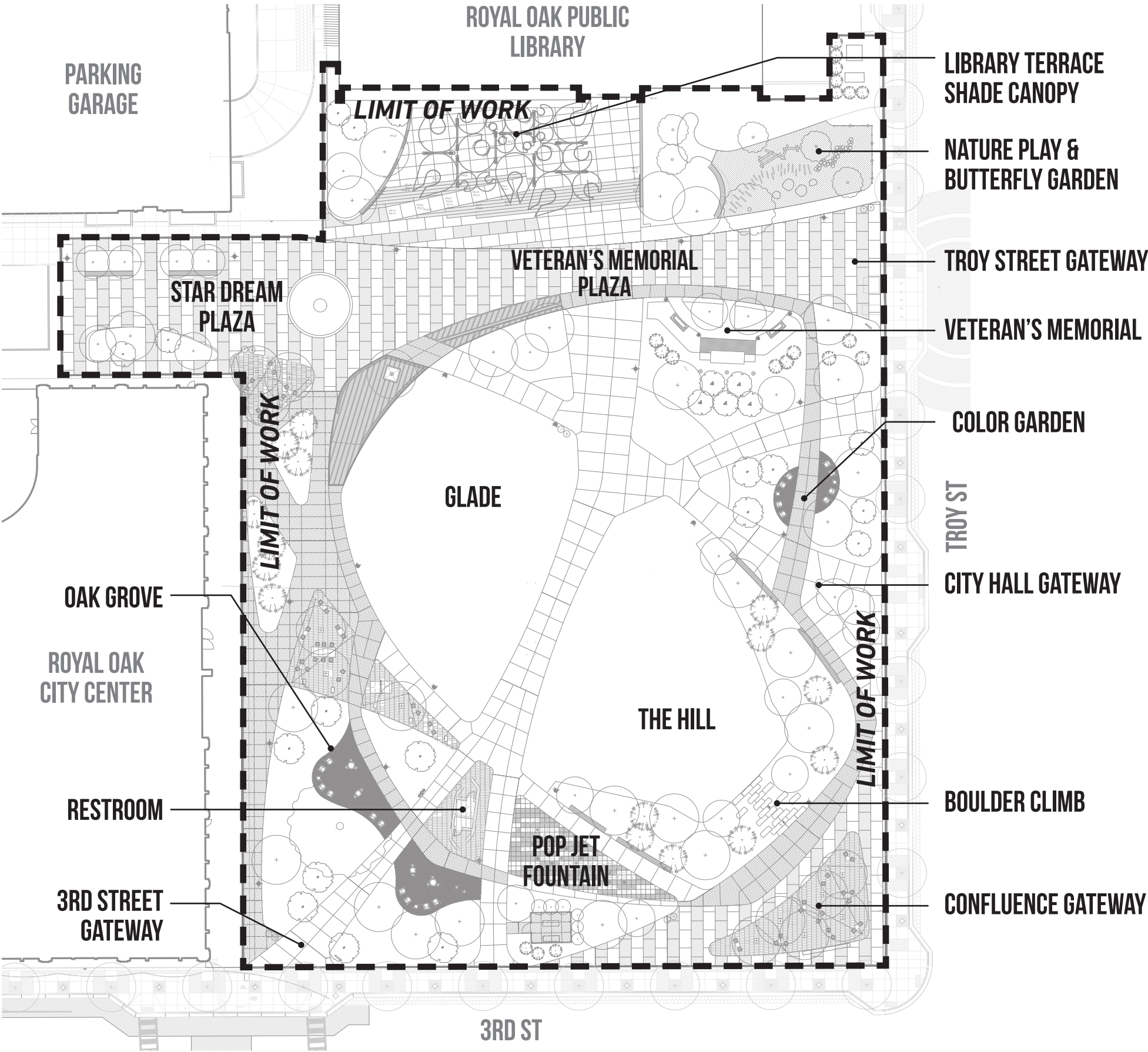
## ***Architecture***

*Library Terrace Structure &  
Restroom Building*



# ROYAL OAK CENTENNIAL PARK

DDA Presentation





# ROYAL OAK CENTENNIAL PARK

**DDA Presentation**





# ROYAL OAK CENTENNIAL PARK

DDA Presentation



3RD ST GATEWAY

OAK GROVE

STARDREAM PLAZA

LIBRARY TERRACE

RESTROOM

THE GLADE

VETERANS MEMORIAL

POP JET FOUNTAIN

VETERANS MEMORIAL PLAZA

BUTTERFLY GARDEN & NATURE PLAY

THE HILL

CITY HALL GATEWAY

COLOR GARDEN

TROY ST GATEWAY

CONFLUENCE PLAZA

3RD ST

TROY ST



# ROYAL OAK CENTENNIAL PARK

*DDA Presentation*





# ROYAL OAK CENTENNIAL PARK

*DDA Presentation*





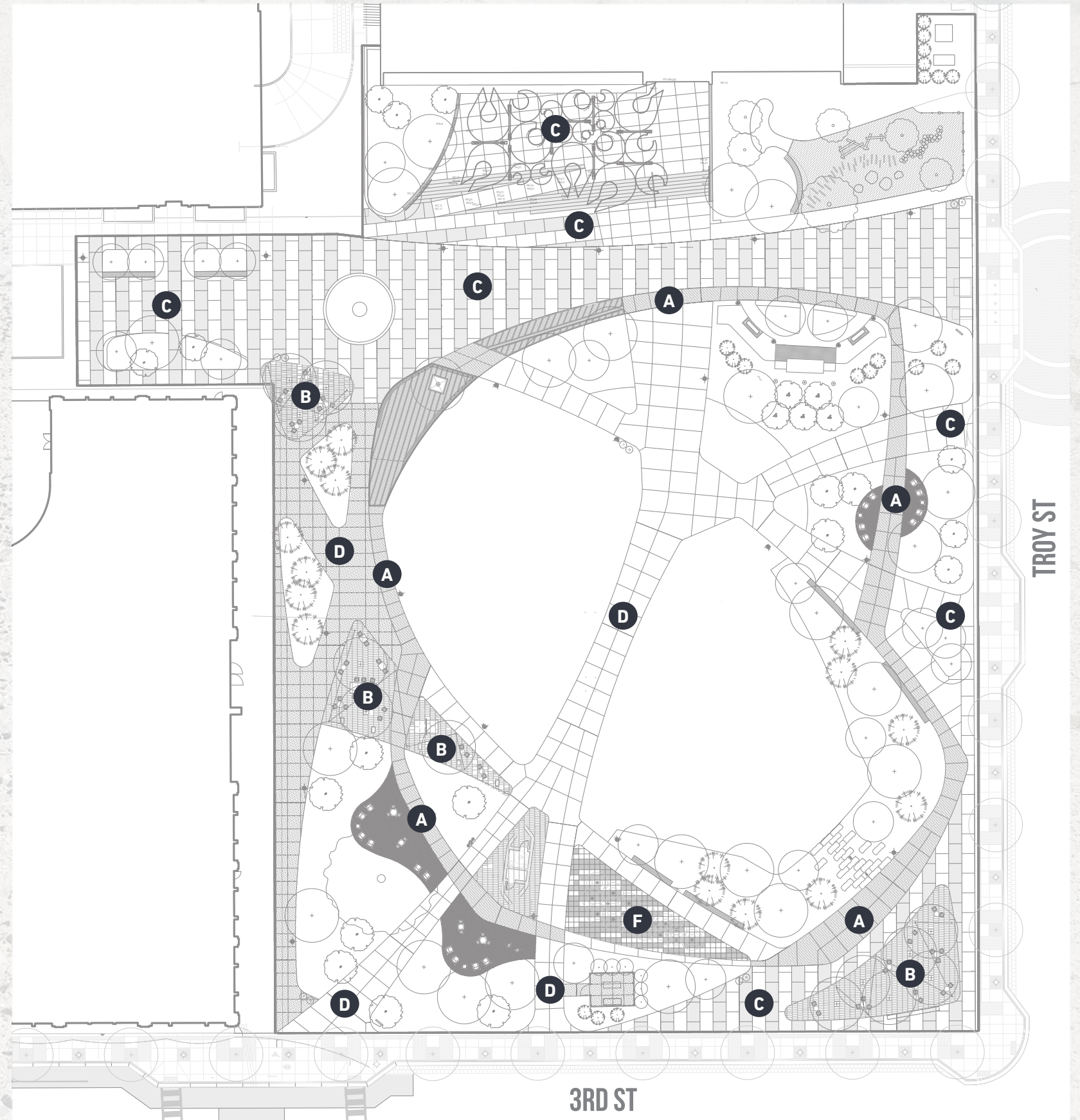
# ROYAL OAK CENTENNIAL PARK

**DDA Presentation**

## HARDSCAPE OVERVIEW

### OVERALL SITE MATERIALS

- A** Perimeter Path
- B** "DNA" Paver plaza
- C** Buff wash / seeded aggregate walk
- D** Buff wash concrete walk
- E** Mulch surface
- F** Fountain pavers





# ROYAL OAK CENTENNIAL PARK

DDA Presentation



## PERIMETER PATH

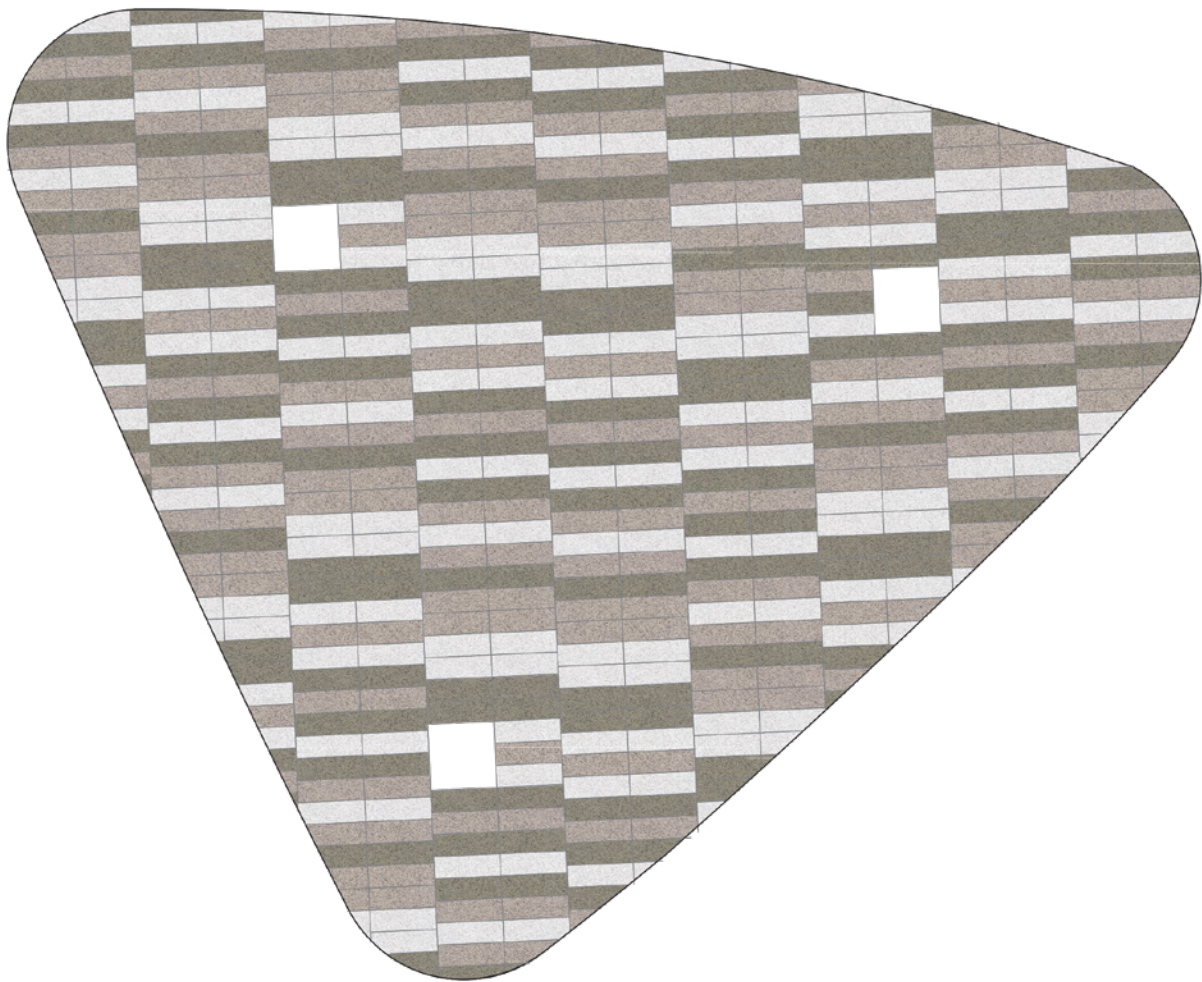
EXPOSED AGGREGATE WITH INTEGRAL COLOR





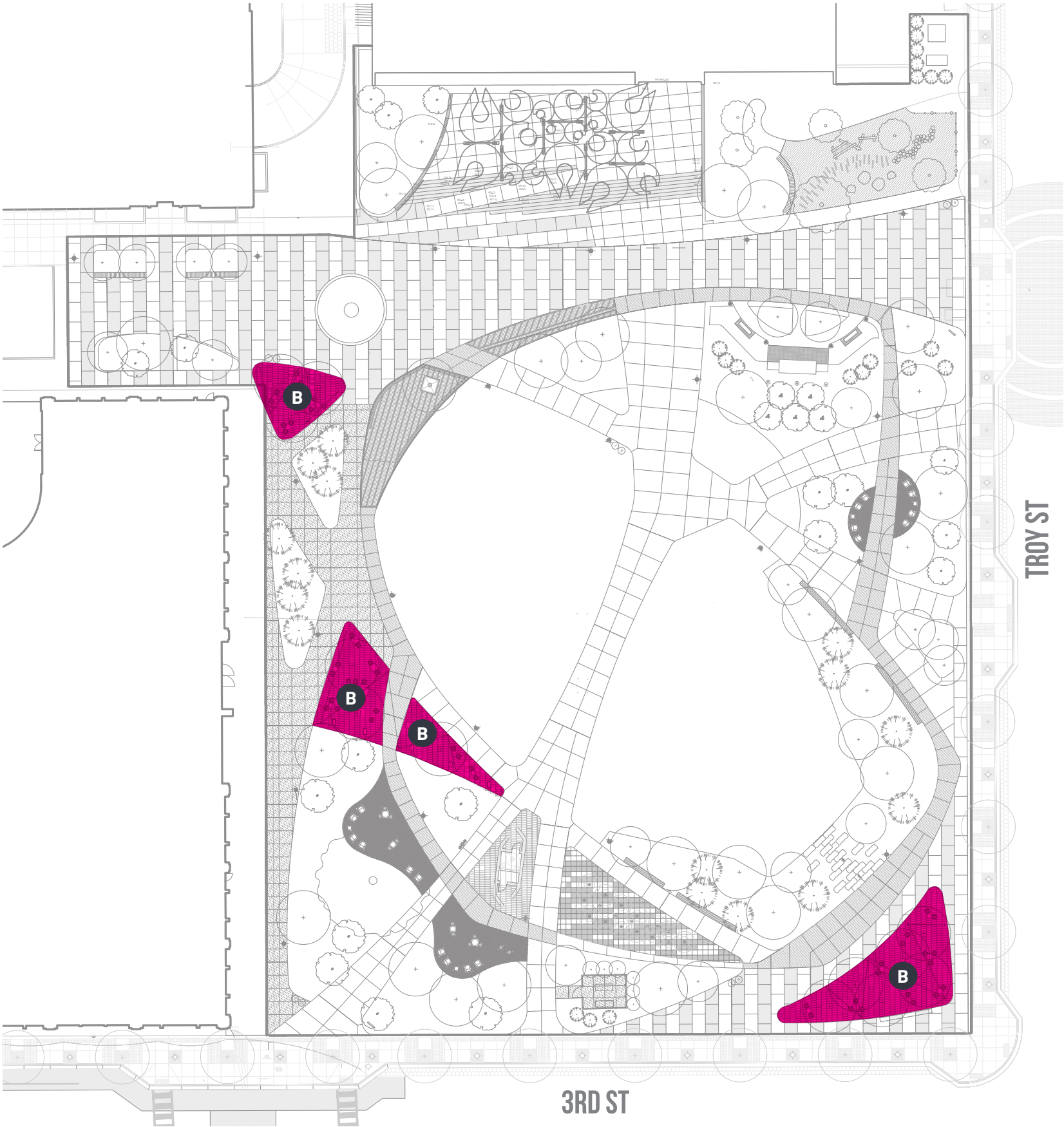
# ROYAL OAK CENTENNIAL PARK

DDA Presentation



## “DNA” PAVERS

UNILOCK. SIZES: 8” X 24”



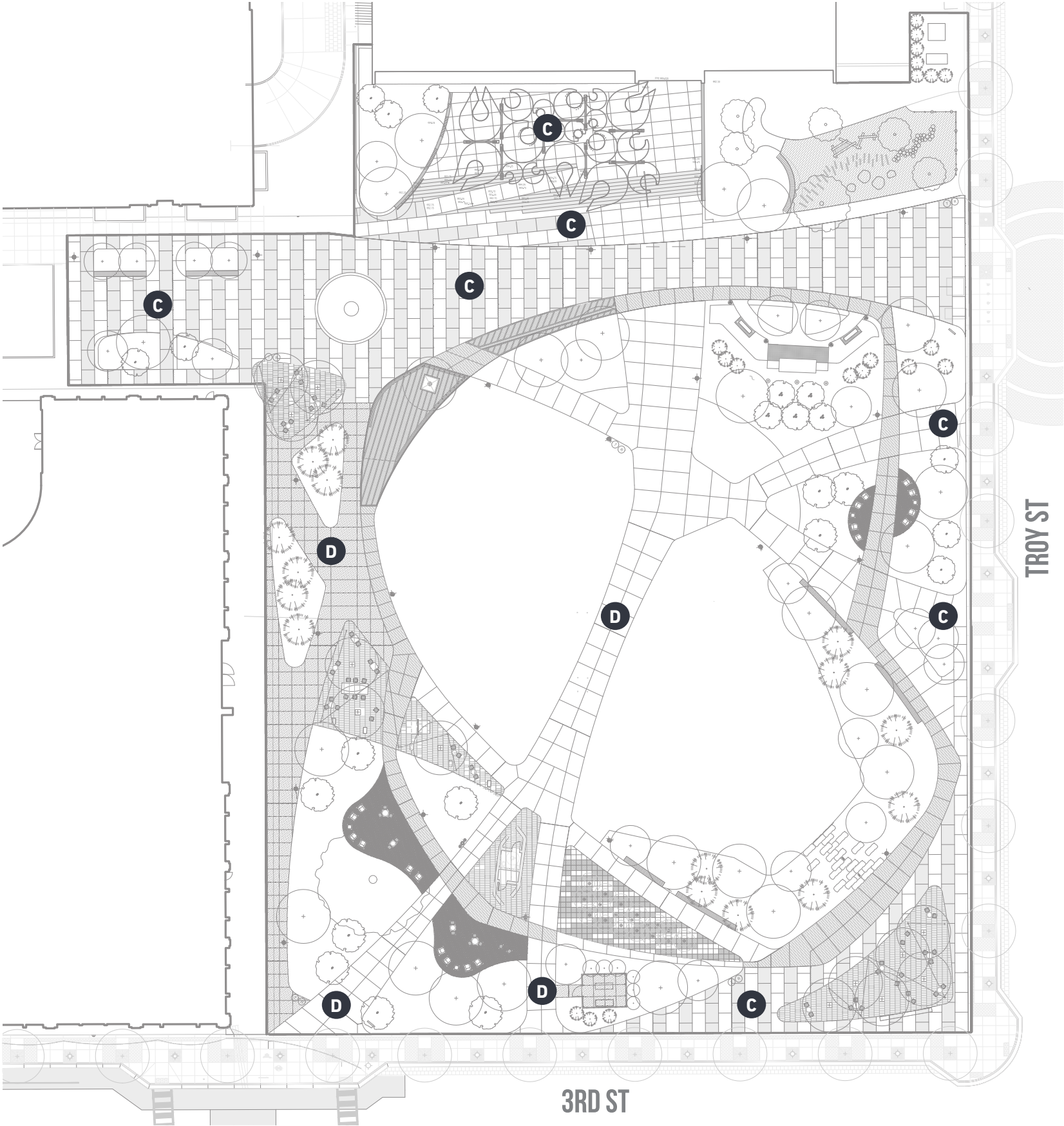


# ROYAL OAK CENTENNIAL PARK

DDA Presentation



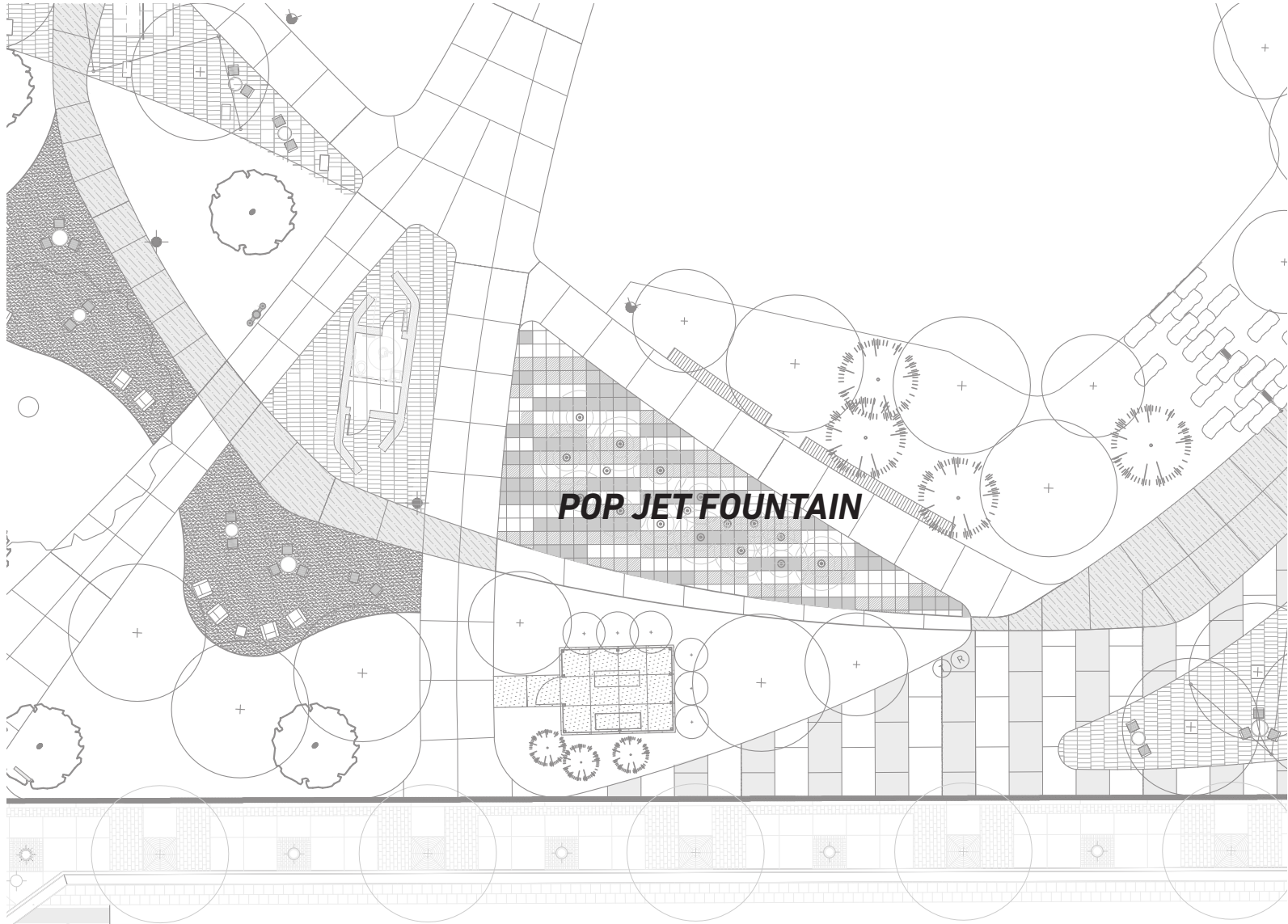
MAIN WALKS *SEEDED AGGREGATE & BUFF WASH  
CONCRETE WALK (C) (D)*





# ROYAL OAK CENTENNIAL PARK

DDA Presentation



## POP JET FOUNTAIN

UNILOCK GRANITE. 24X24 PAVERS.

- GOALS:**
- LOW MAINTENANCE
  - CHLORINE RESISTANT
  - HYGIENIC
  - SAFE



COMPARE TO  
"DNA" PLAZA  
PAVERS





# ROYAL OAK CENTENNIAL PARK

DDA Presentation

■ **APPROACH TO MAIN  
MEMORIAL, BELOW BENCHES**



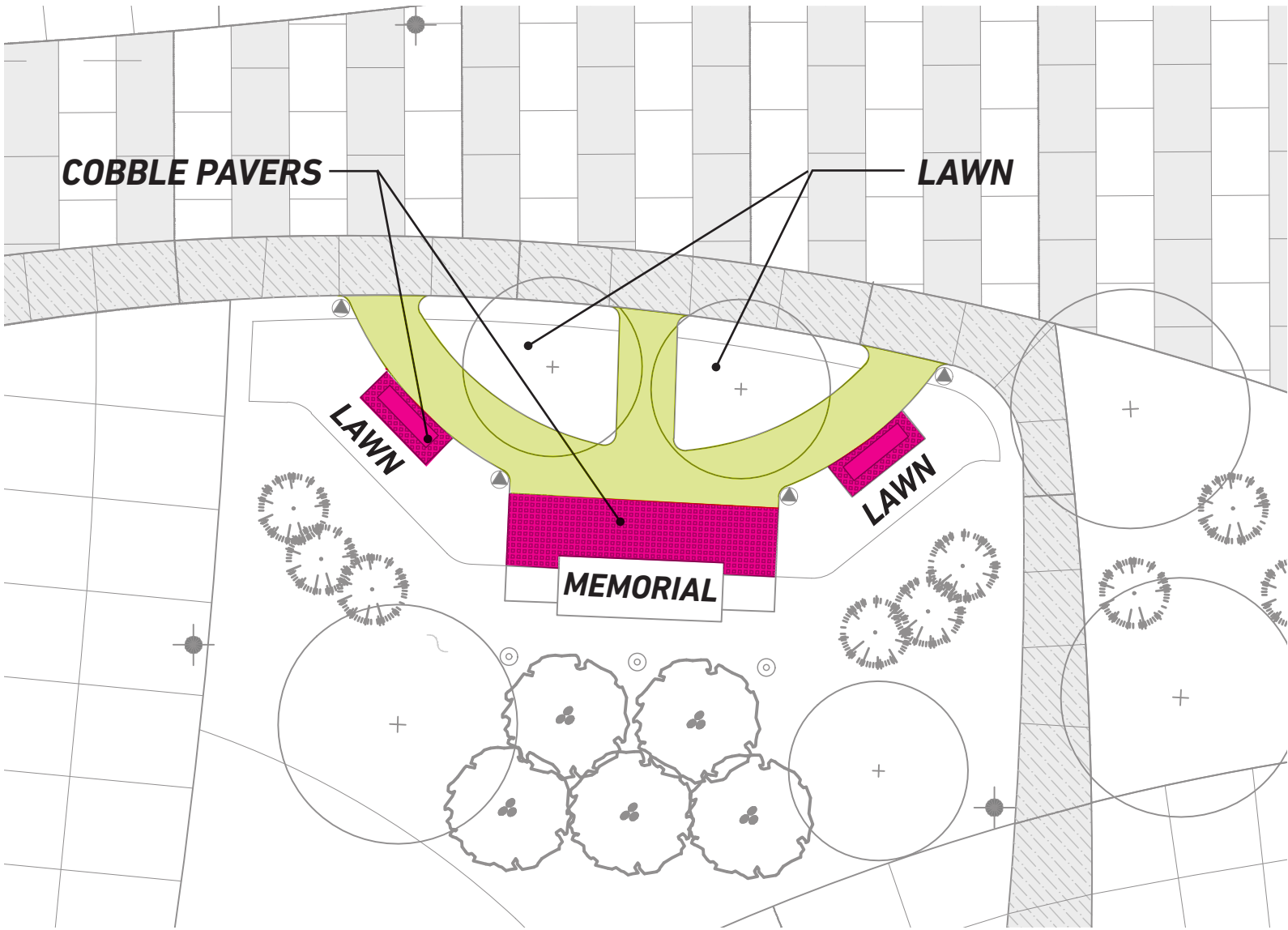
## VETERAN'S MEMORIAL

**HARDSCAPE MATERIALS**



■ **MAIN WALKS**

- GOALS:**
- **SKATEBOARD  
DETERRENT**
  - **EVENTS**
  - **ADA ACCESSIBLE**





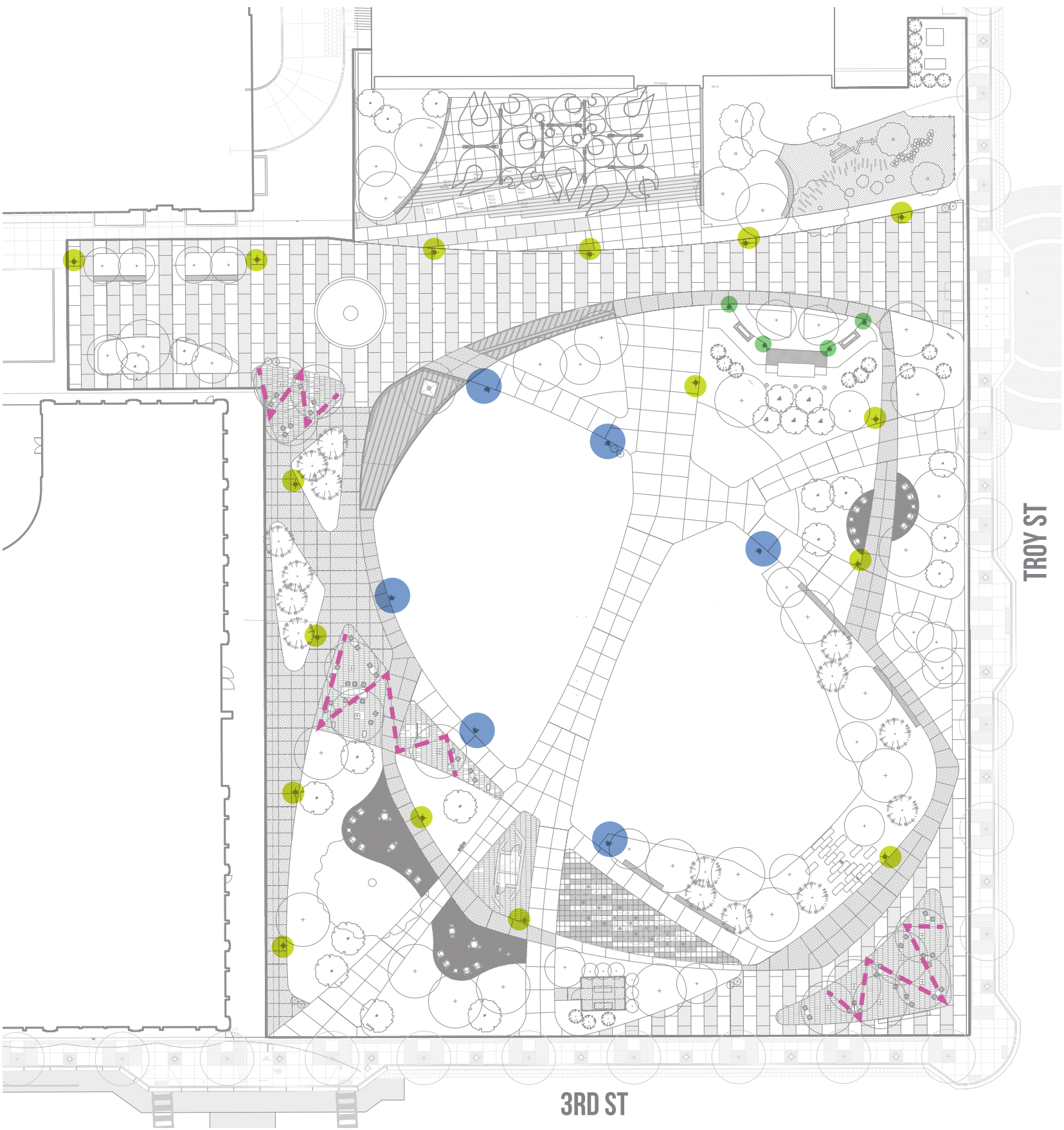
# ROYAL OAK CENTENNIAL PARK

DDA Presentation

## LIGHTING OVERVIEW

OVERALL SITE LIGHTING FIXTURES

- Performance Pole Light
- Pedestrial Pole Light
- Bollard Path Light
- ✧ Overhead String Lights





# ROYAL OAK CENTENNIAL PARK

DDA Presentation

**PERFORMANCE POLE  
LIGHT**

SELUX

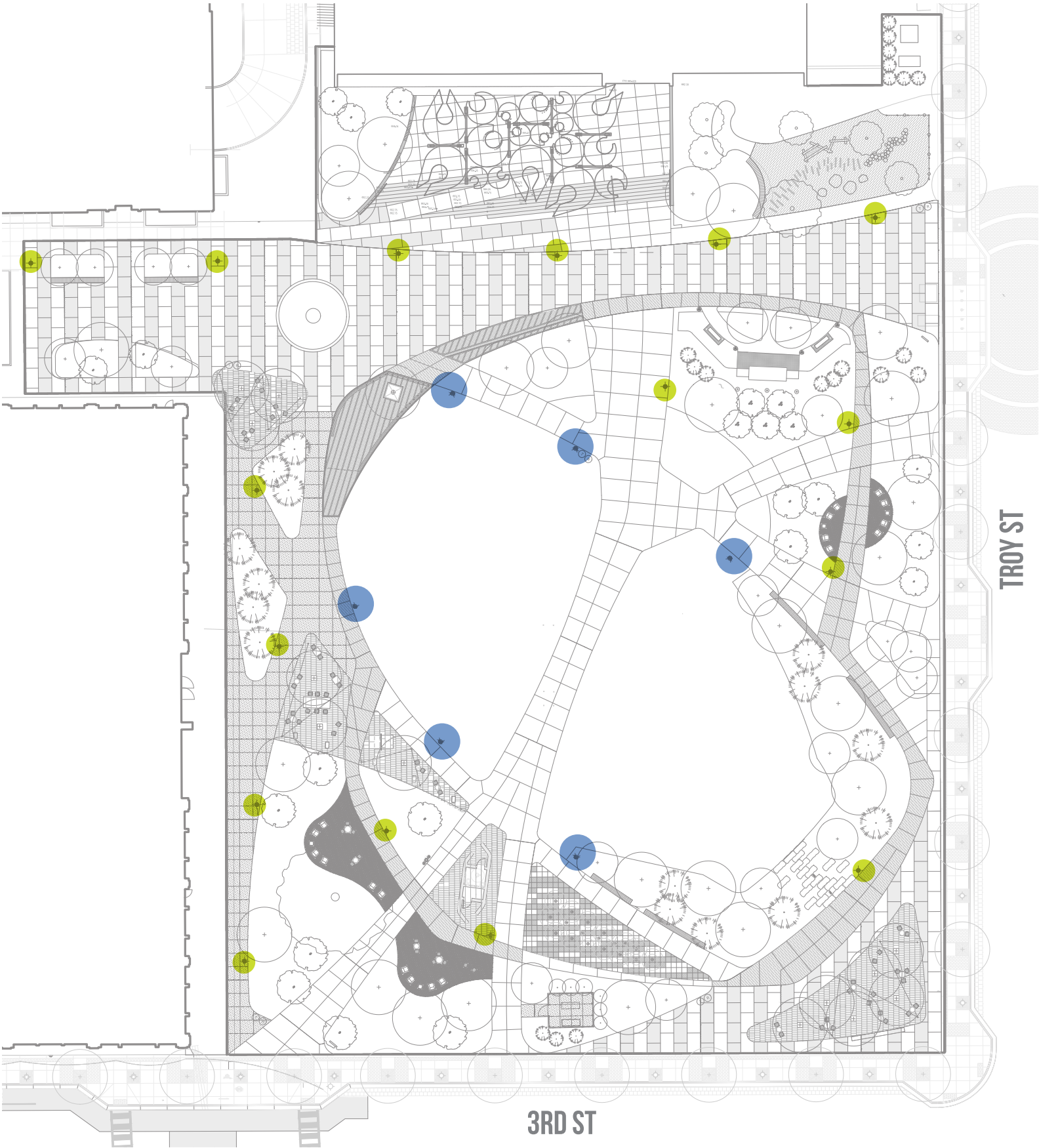
Olivio  
25 ft height  
Black



**PEDESTRIAN POLE LIGHT**

SELUX

Olivio  
25 ft height  
Black





# ROYAL OAK CENTENNIAL PARK

DDA Presentation



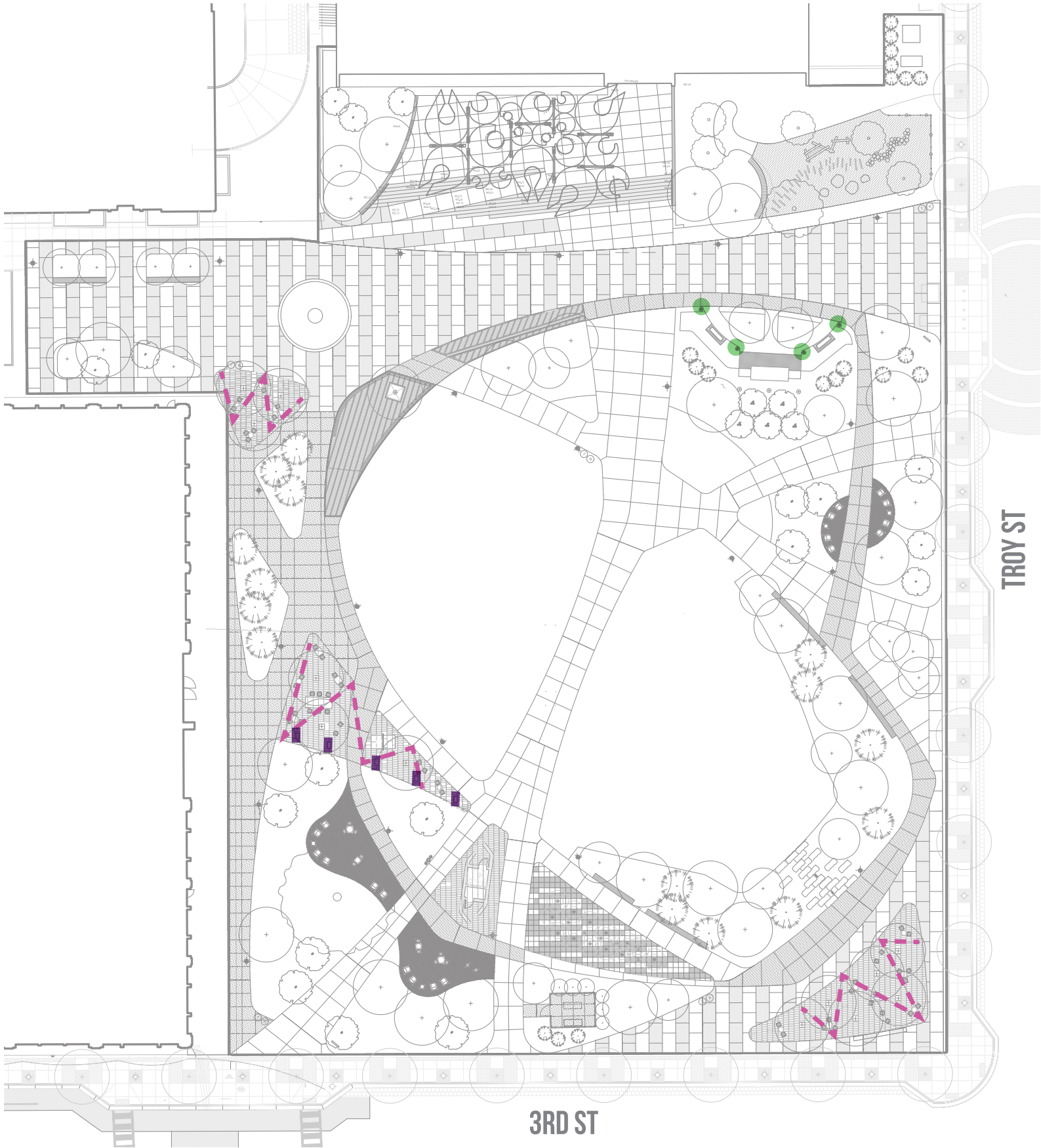
## BOLLARD LIGHT

Selux  
Elo, black



## OVERHEAD STRING LIGHTS

Fastened to 4" steel poles, black





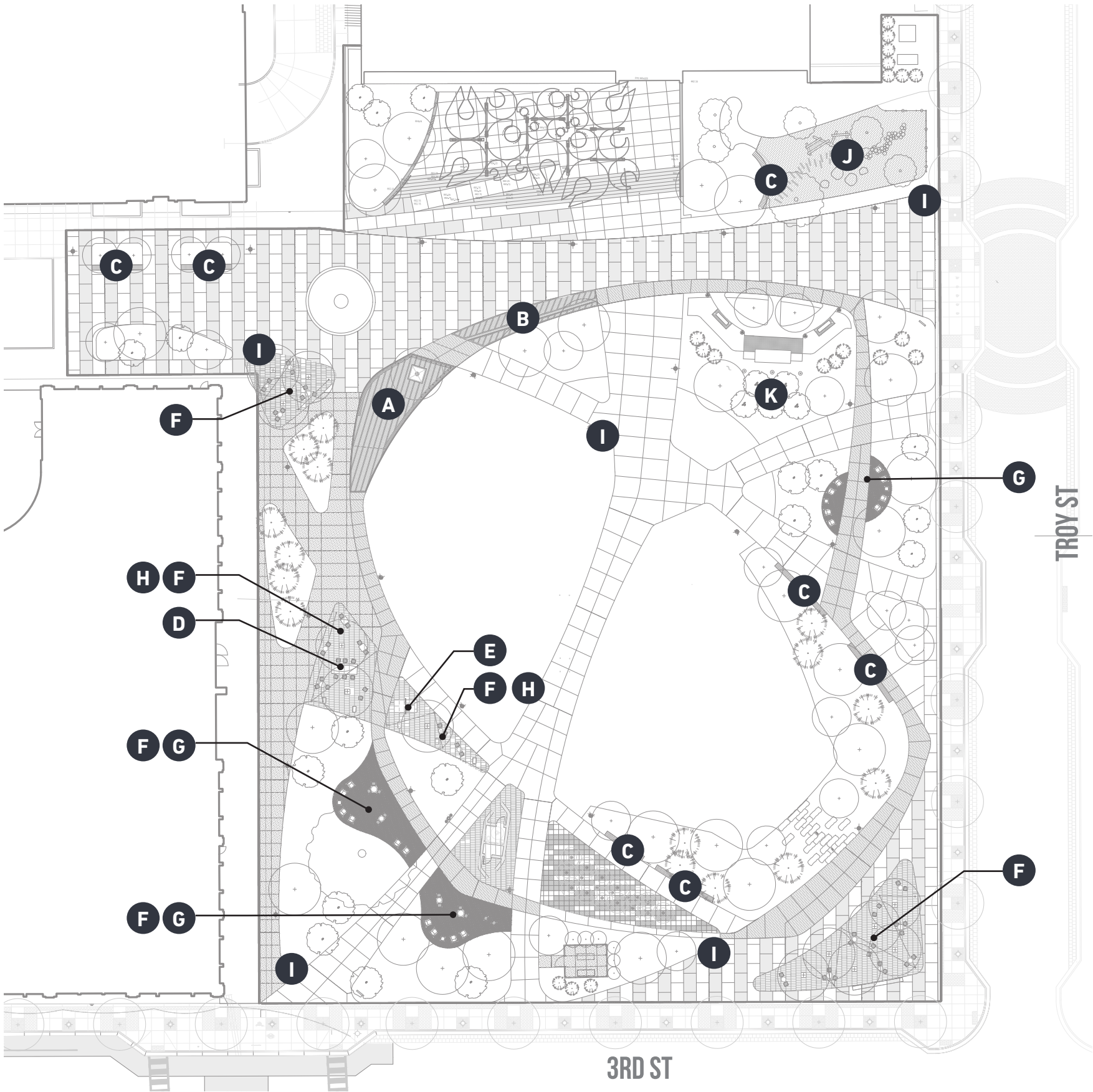
# ROYAL OAK CENTENNIAL PARK

DDA Presentation

## SITE FURNISHINGS OVERVIEW

OVERALL SITE FURNISHINGS

- A Stage
- B Feature Bench
- C Linear Bench
- D Community Table
- E Table Tennis
- F Bistro Table & Chairs
- G Lounge Chairs & End Tables
- H Chess Tables
- I Trash & Recycling Receptacles
- J Nature Play
- K Relocated Flag Poles





# DDA Presentation

NOTES :

1. PROVIDE SHOP DRAWINGS AND SAMPLES FOR APPROVAL PRIOR TO START OF CONSTRUCTION.
2. FIELD VERIFY ALL DIMENSIONS PRIOR TO SUBMITTAL.
3. FRAMEWORK TO BE NO.1 PRESSURE-TREATED PINE.
4. CUTS AND END-GRAIN TREATMENT FOR FRAMEWORK:
  - 4.1. CUTS AND END-GRAIN ON ALL FRAMEWORK TO RECEIVE WOOD SEALER TO PREVENT ROT. ANCHORSEAL 2 WOOD SEALER, SEALKRETE ACRYLIC WATER REPELLENT OR APPROVED EQUAL.
5. TOP OF JOISTS AND BEAMS TREATMENT FOR FRAMEWORK:
  - 5.1. ALL HORIZONTAL SURFACES ORIENTED UP TO RECEIVE A FLEXIBLE, SELF-HEALING PEEL & STICK FLASHING TO PREVENT ROT. GRACE VYCOR PLUS; DECK PROTECTOR, DECKWISE WISEWRAP; JOIST TAPE, OR APPROVED EQUAL.
6. IPE WOOD BOARDS: NO EXPOSED CUTS. MITER CORNERS, SCARF END TO END JOINTS, CUT EDGE TO BE COVERED BY FASCIA BOARD AS SHOWN.
7. LAYOUT DECKING SCREWS IN STRAIGHT LINES.
8. DIMENSIONS SHOWN ARE MEASURED TO FACE OF CONCRETE STRUCTURE.

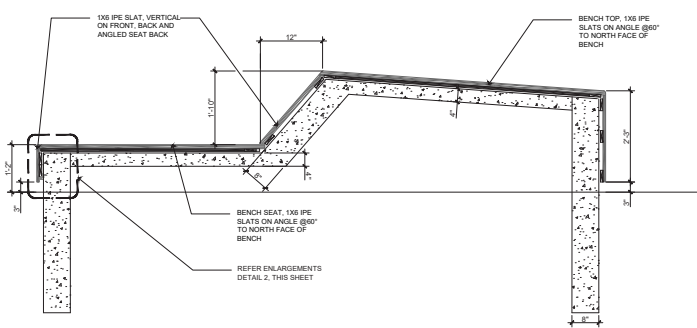


# ROYAL OAK CENTENNIAL PARK

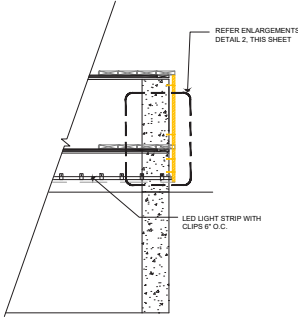
DDA Presentation

## FEATURE BENCH

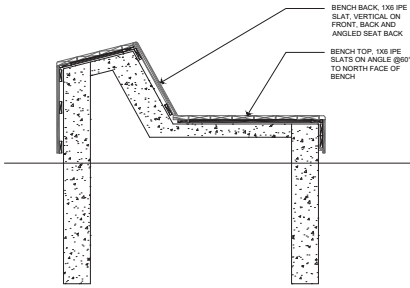
NOTES  
REFER SHEET DETAIL 1, THIS SHEET FOR PLATFORM BENCH PLAN AND DETAIL 2, THIS SHEET FOR ENLARGEMENTS  
CONTRACTOR TO PROVIDE SHOP DRAWINGS PRIOR TO FABRICATION FOR APPROVAL



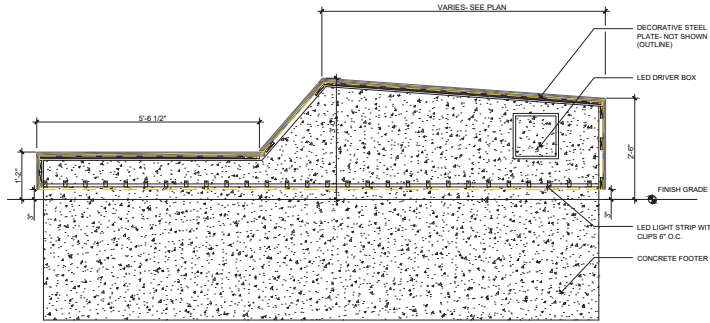
1 PLATFORM BENCH SECTION A  
SCALE: 3/4" = 1'-0"



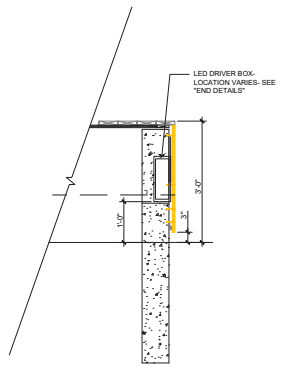
2 PLATFORM BENCH SECTION B  
SCALE: 3/4" = 1'-0"



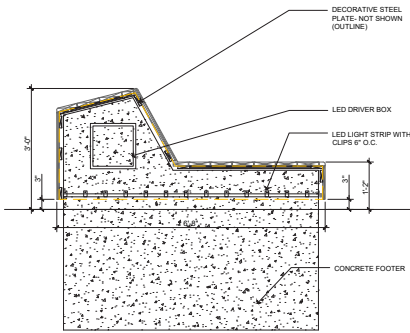
3 PLATFORM BENCH SECTION C  
SCALE: 3/4" = 1'-0"



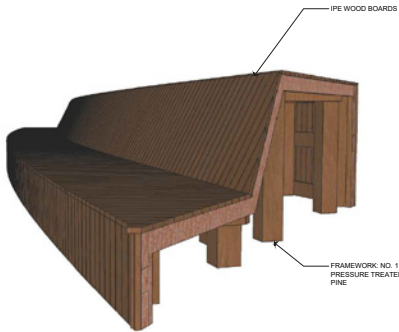
4 PLATFORM BENCH ELEVATION- SOUTH FACE  
SCALE: 3/4" = 1'-0"



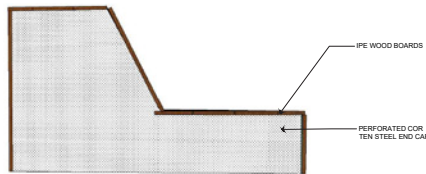
5 PLATFORM BENCH SECTION D  
SCALE: 3/4" = 1'-0"



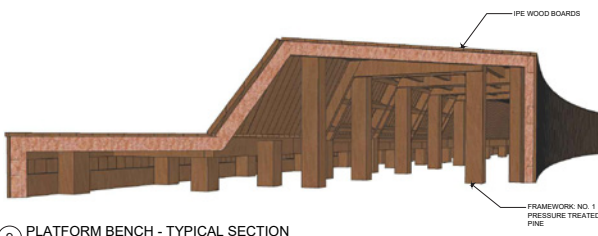
6 PLATFORM BENCH ELEVATION- NORTH FACE  
SCALE: 3/4" = 1'-0"



7 PLATFORM BENCH  
SCALE: NTS



8 PLATFORM- TYPICAL END  
SCALE: 1" = 1'-0"



9 PLATFORM BENCH - TYPICAL SECTION  
SCALE: 1" = 1'-0"

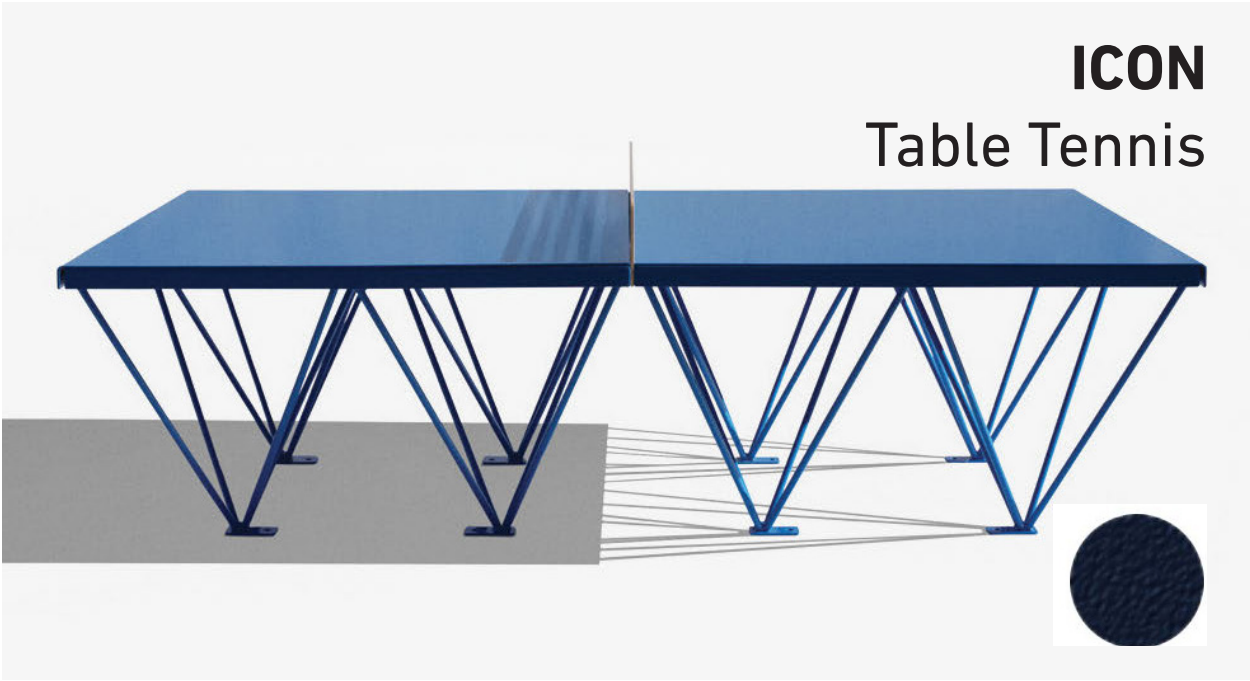




# ROYAL OAK CENTENNIAL PARK

DDA Presentation

SITE  
FURNISHINGS

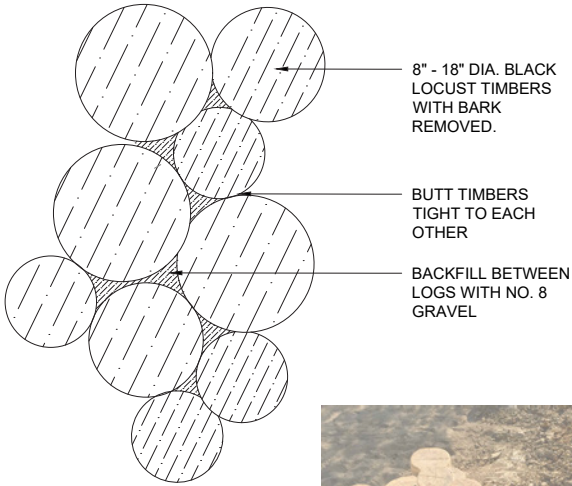
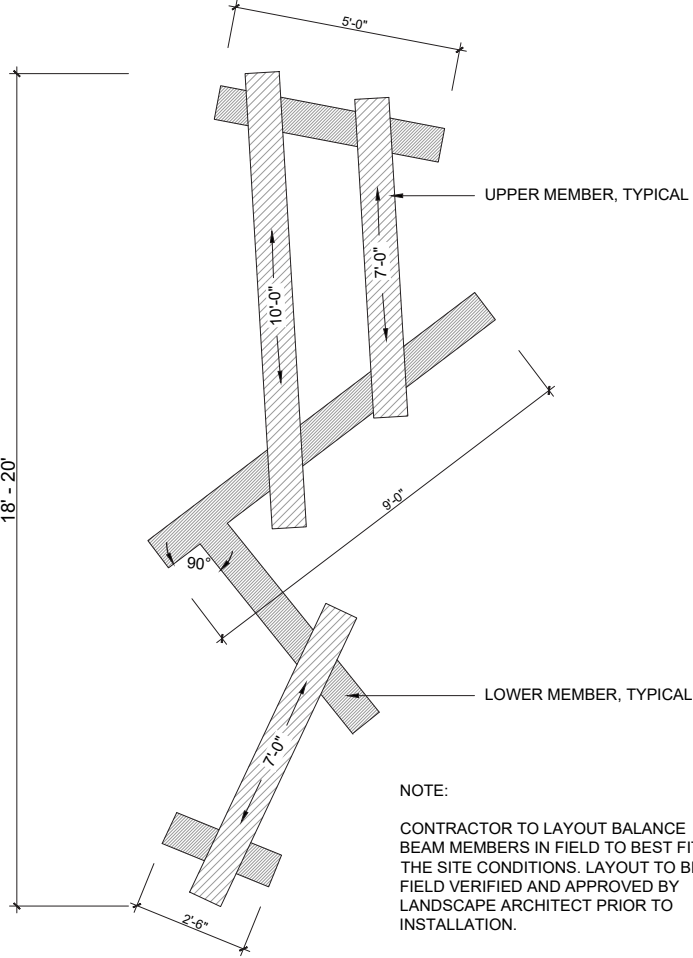




# ROYAL OAK CENTENNIAL PARK

DDA Presentation

## BALANCE BEAM

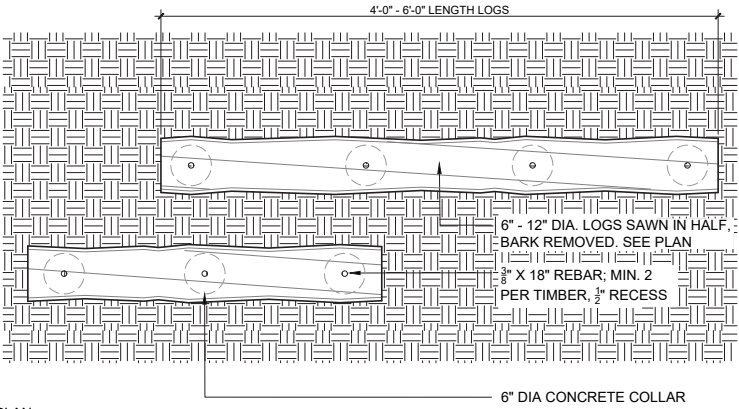


## LOG STEPPERS

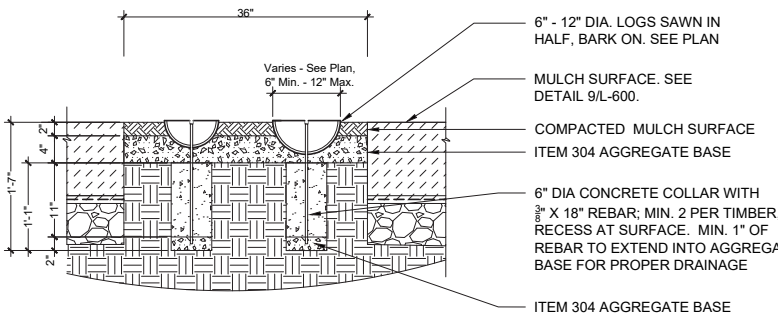


## PLANK WALK

- NOTES:
1. TIMBERS TO BE BLACK LOCUST #2 SAW LOGS SAWN IN HALF WITH BARK REMOVED.
  2. ALIGN/LOCATE TIMBERS IN ACCORDANCE TO PLAN, MAINTAIN MINIMUM 6" GAPS BETWEEN TIMBERS.
  3. PROVIDE 4 EXTRA PLANKS FOR FIELD ADJUSTMENTS.
  4. THE CONTRACTOR SHALL INSTALL A MOCK-UP SECTION OF THE PLANK PATHWAY APPROXIMATELY 10' IN LENGTH TO BE APPROVED BY OWNER'S REPRESENTATIVE PRIOR TO INSTALLATION. IF APPROVED, MOCK-UP MAY BE USED AS PART OF FINISHED INSTALLATION.

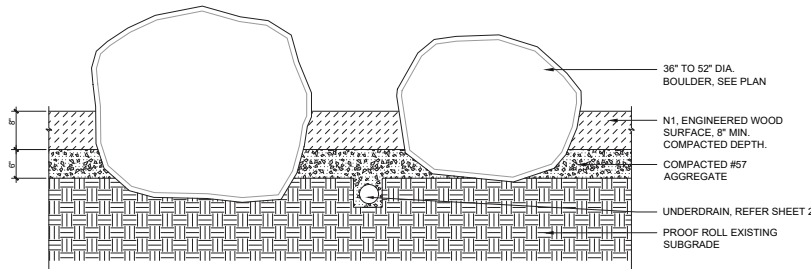


PLAN



SECTION

## BOULDER RING





# ROYAL OAK CENTENNIAL PARK

***DDA Presentation***



# **CENTENNIAL COMMONS** CANOPY DESIGN

07.16.20



Red Oak Leaf





DESIGN CONCEPT

CONCEPTUAL PRECEDENTS



Red Oak Leaf



DESIGN CONCEPT

CONCEPTUAL PRECEDENTS





DESIGN CONCEPT

CONCEPTUAL DEVELOPMENT

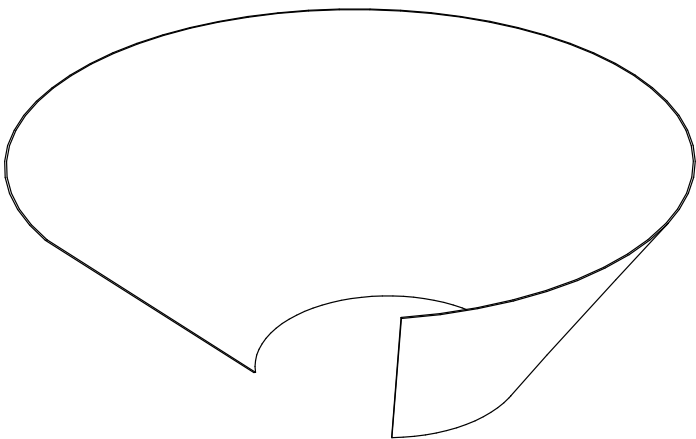
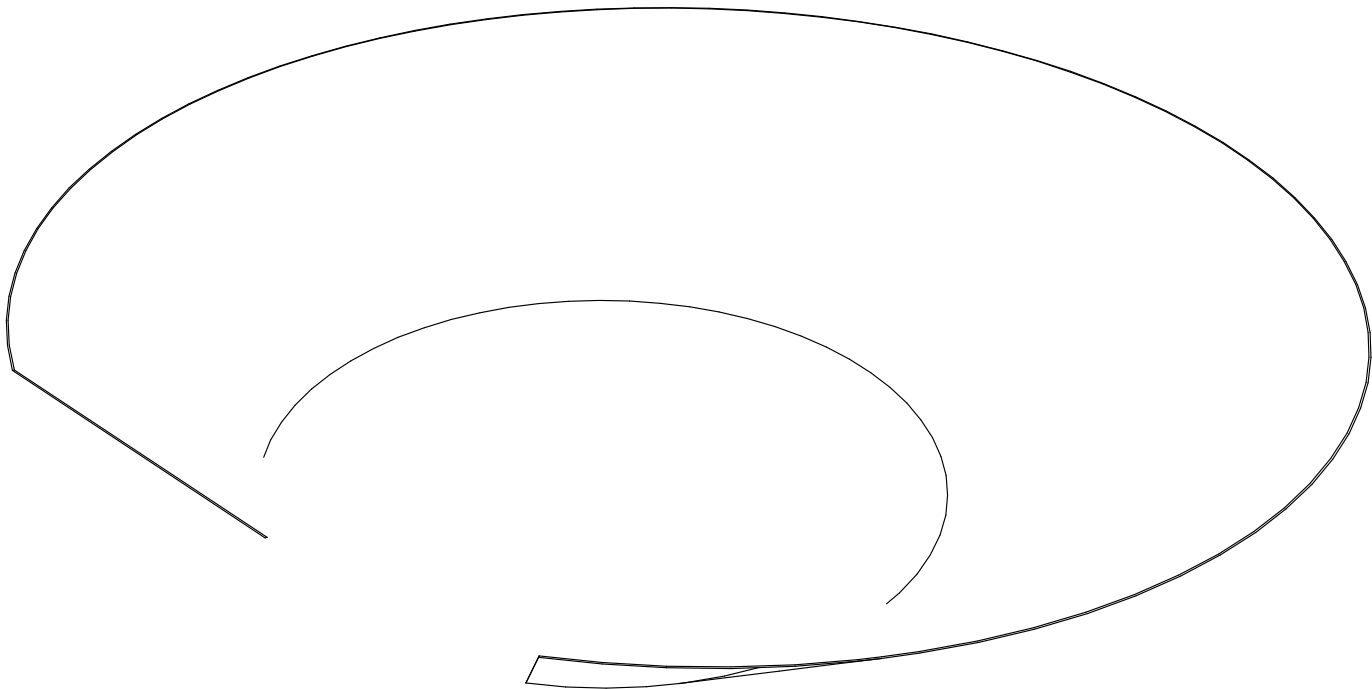
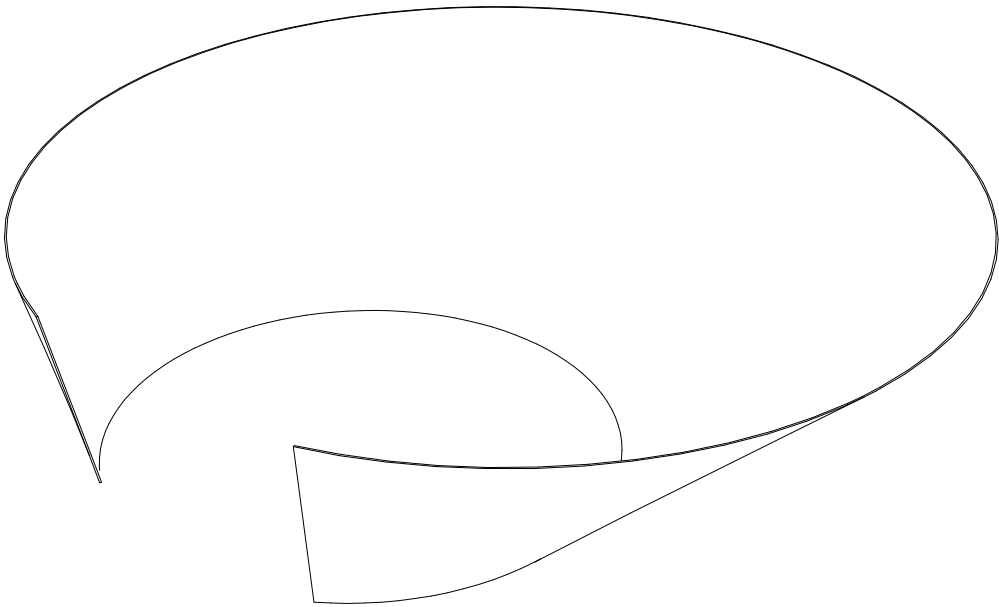
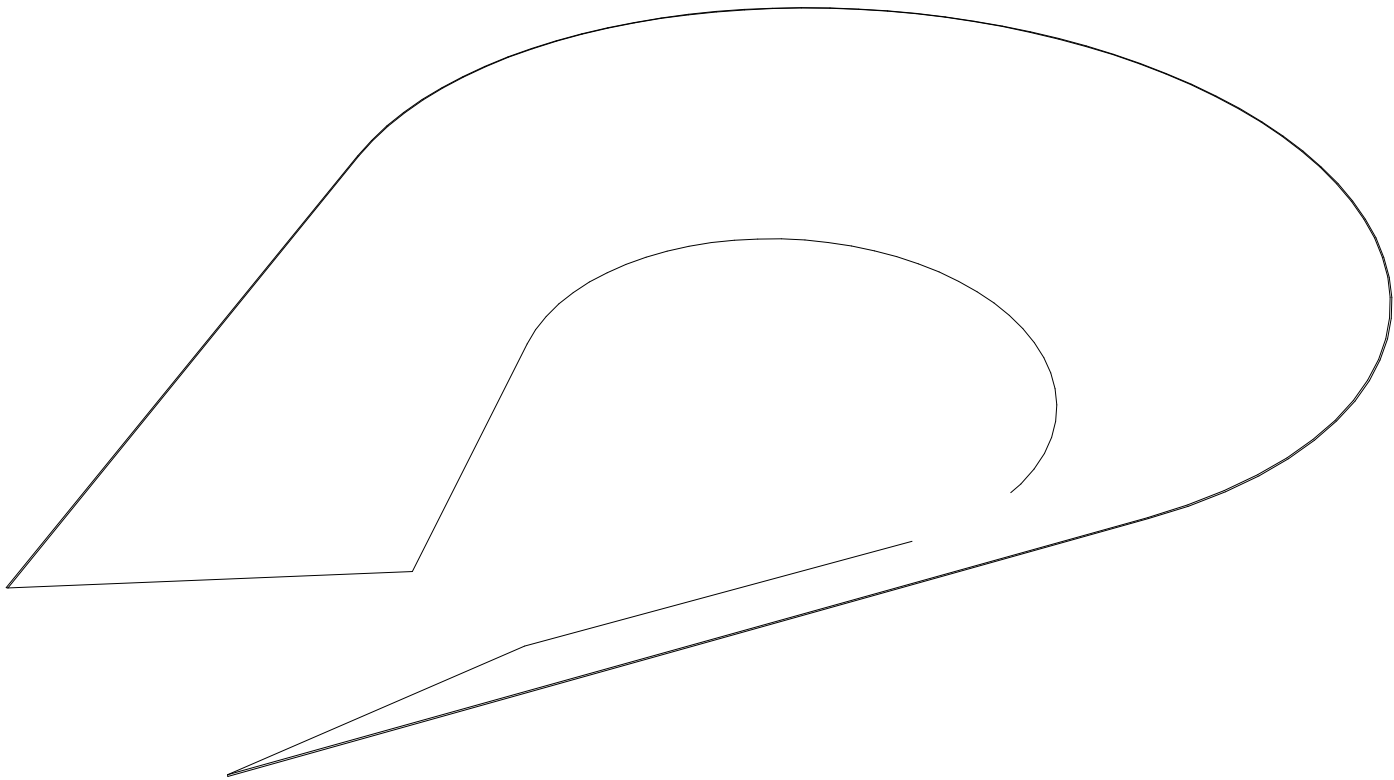


Paper sketch model



DESIGN CONCEPT

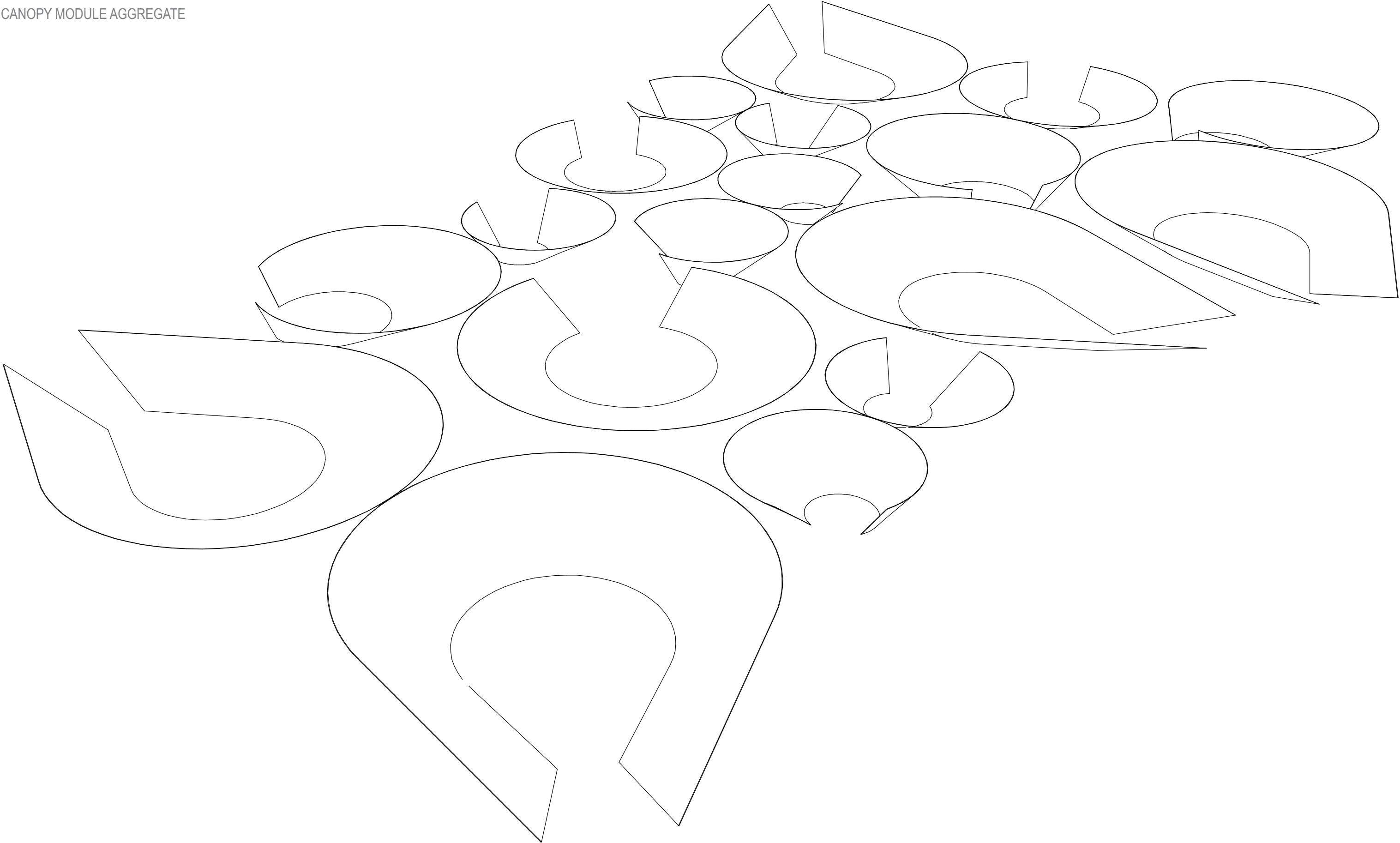
CANOPY MODULES





DESIGN CONCEPT

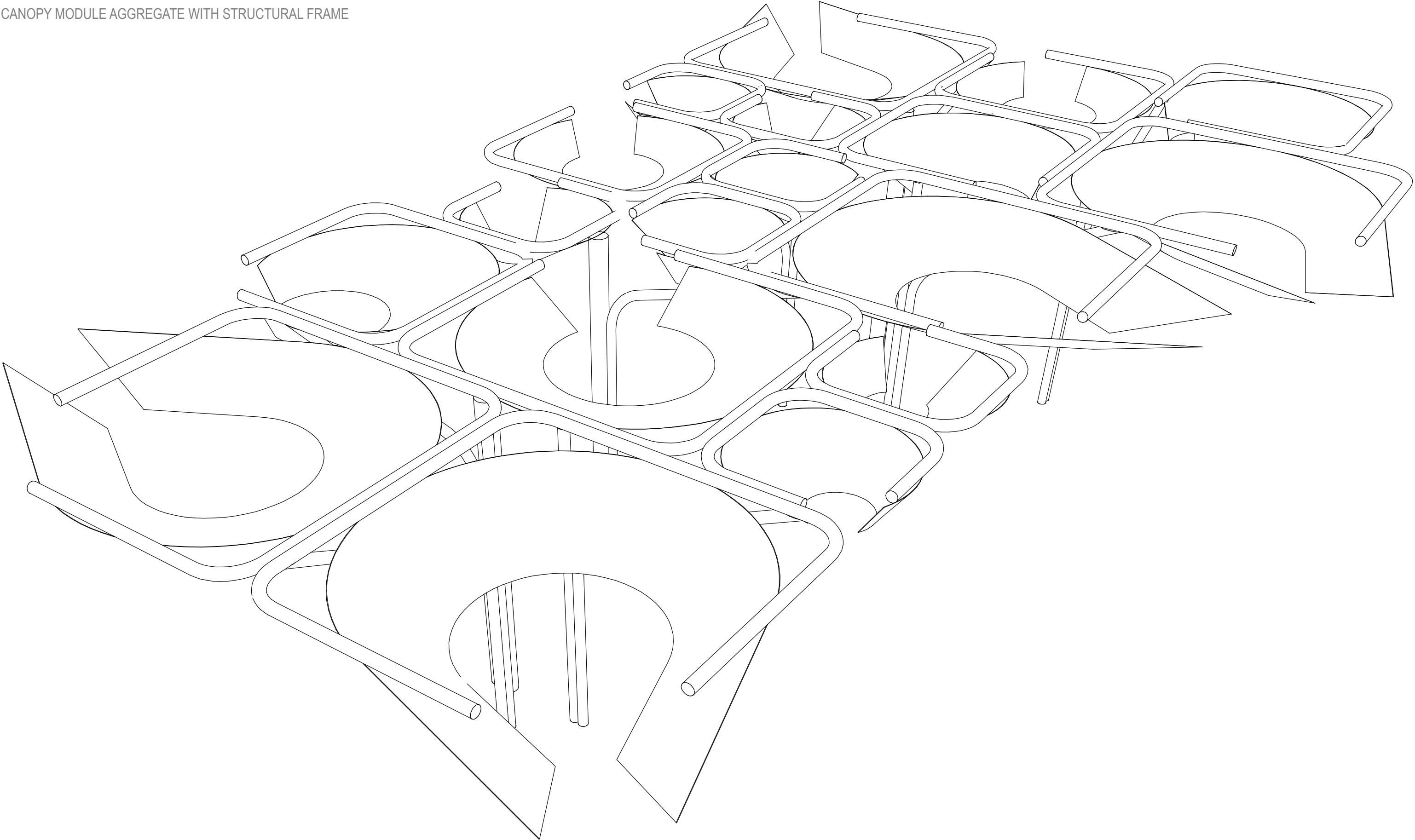
CANOPY MODULE AGGREGATE





DESIGN CONCEPT

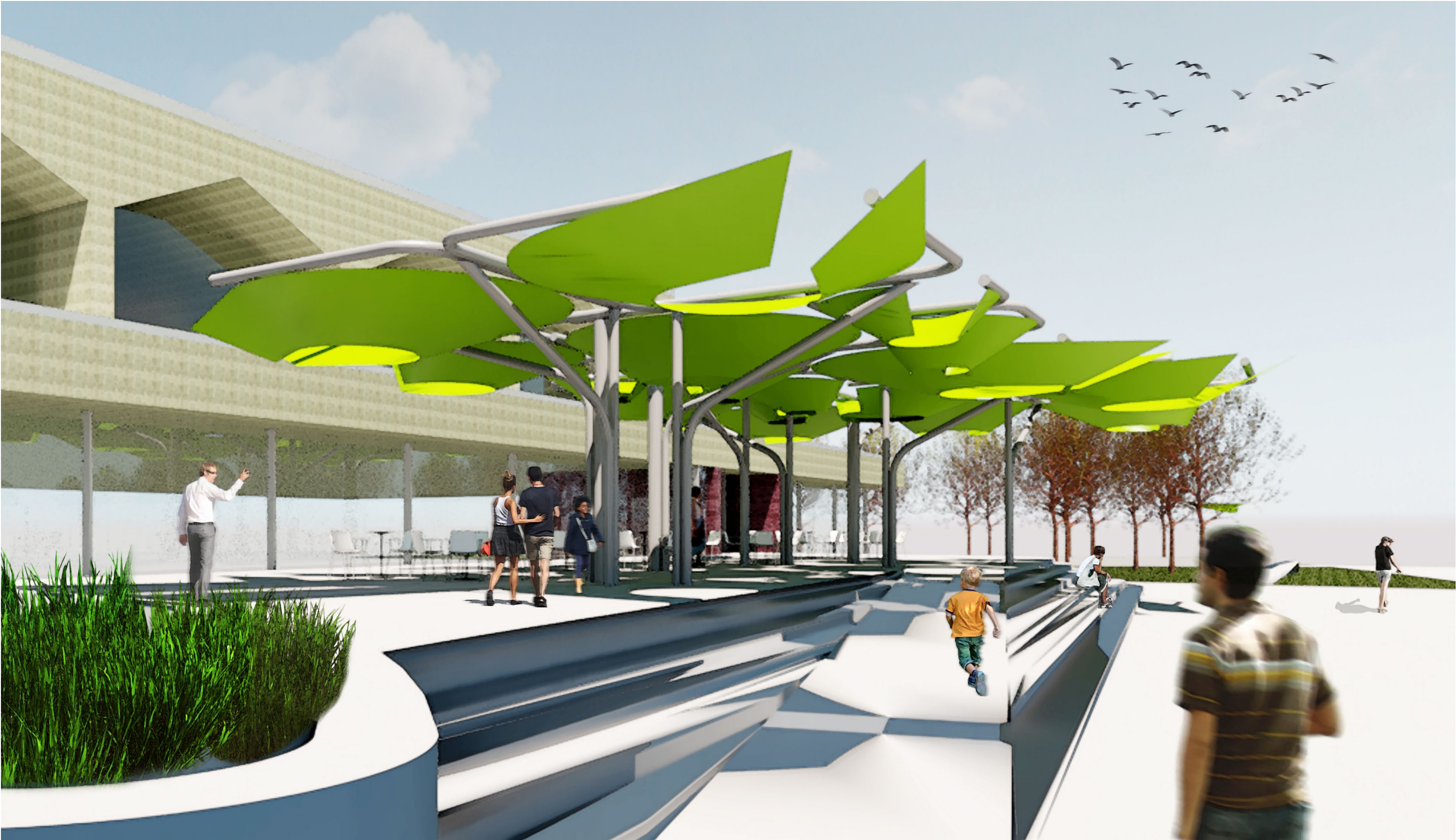
CANOPY MODULE AGGREGATE WITH STRUCTURAL FRAME





DESIGN CONCEPT

CANOPY FROM RAMP APPROACH





DESIGN CONCEPT

CANOPY FROM UPPER TERRACE





DESIGN CONCEPT

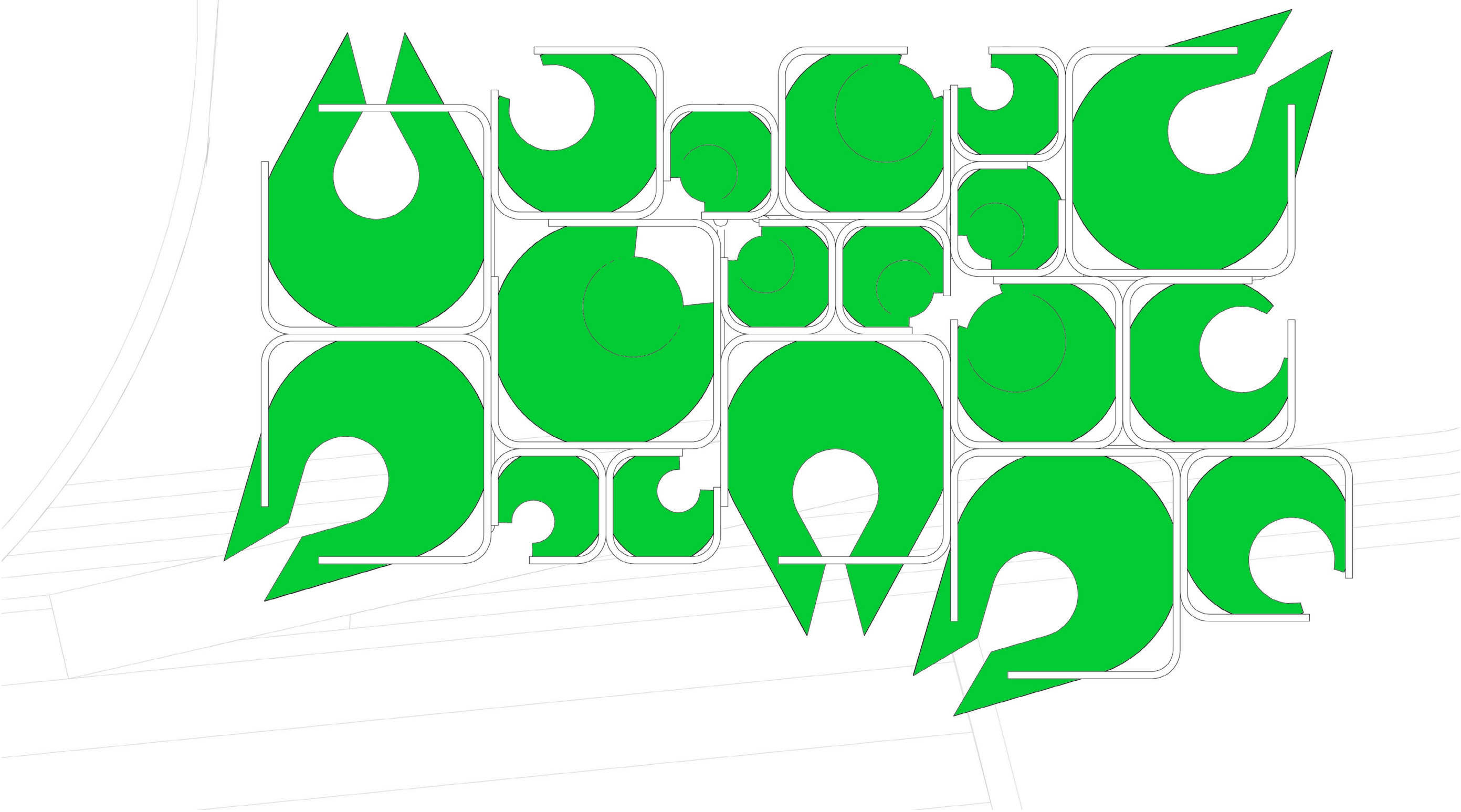
CANOPY FROM SOUTH





DESIGN CONCEPT

ROOF PLAN

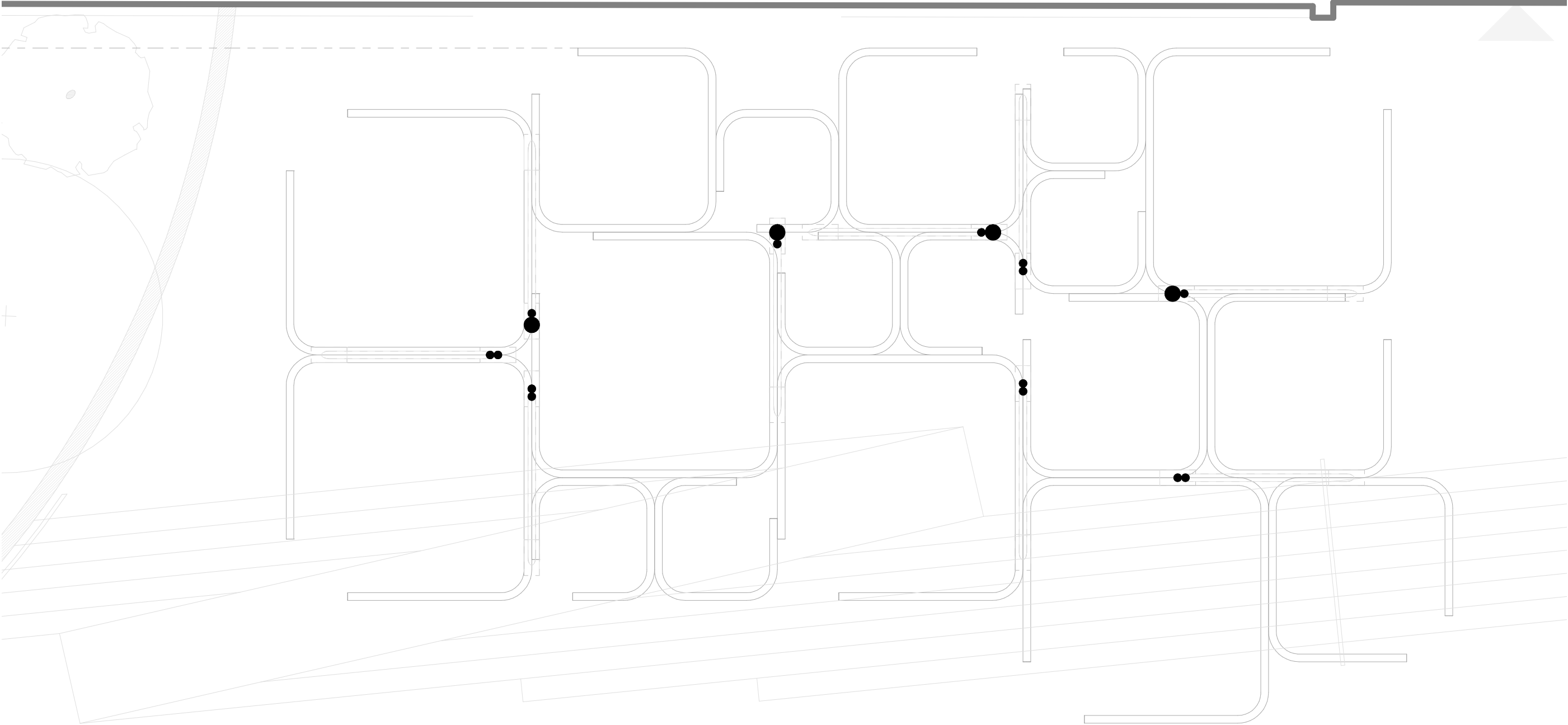


CANOPY COVERAGE: Approximately 1,451 SF / 97 Individuals @ 15 SF each

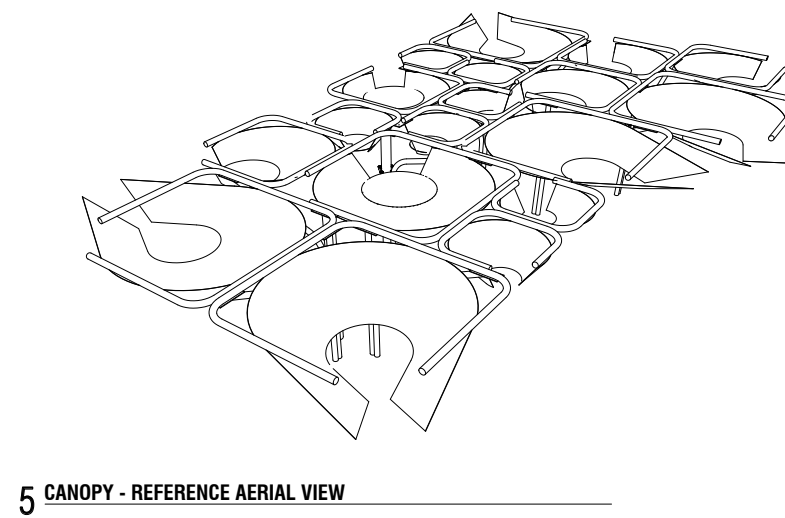
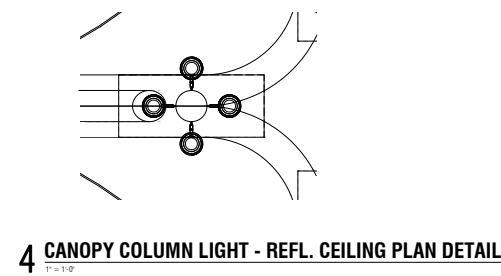
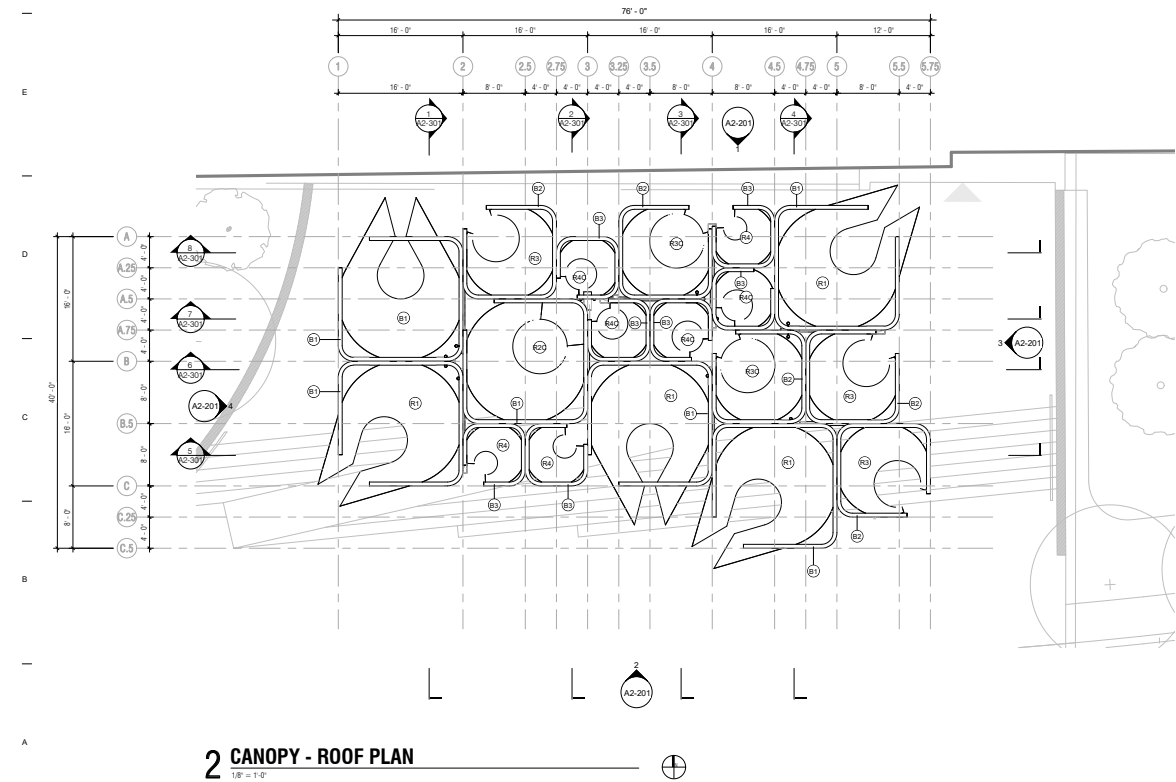
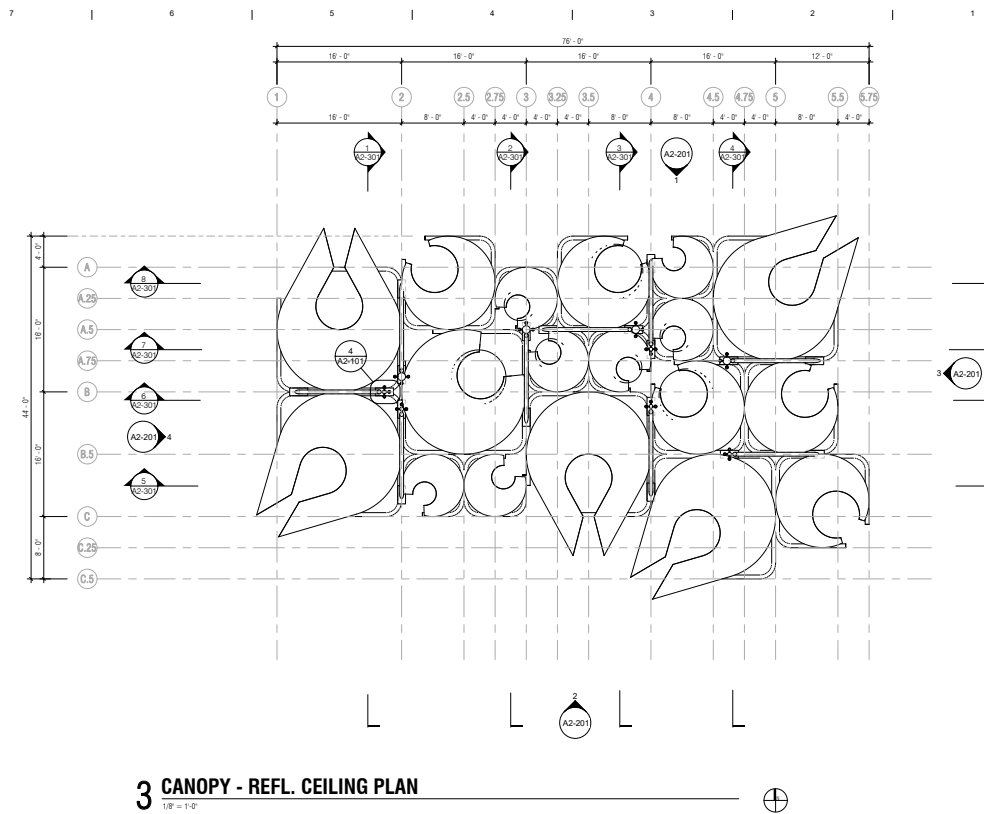
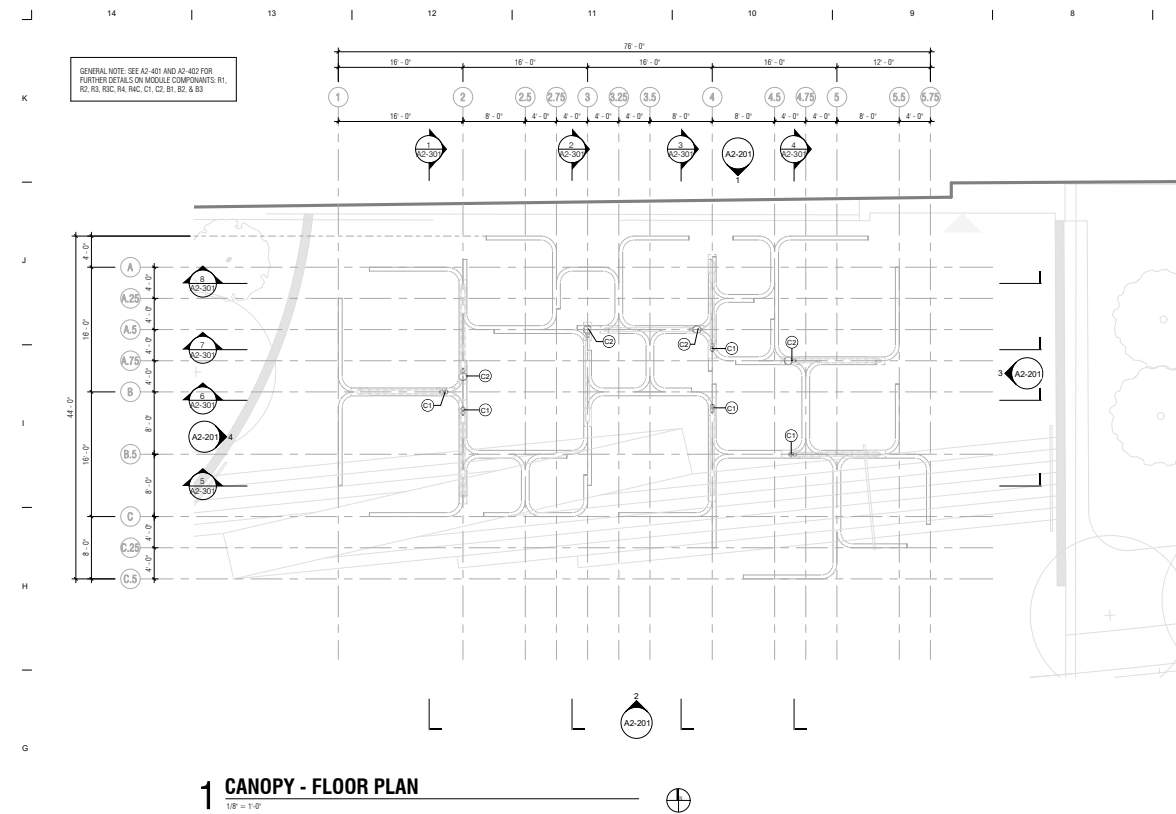


DESIGN CONCEPT

FLOOR PLAN







# MKSK

LANDSCAPE ARCHITECTURE + URBAN PLANNING

607 WEST MAIN STREET #400  
LOUISVILLE, KENTUCKY 40202  
502.694.1416 [MKSSTUDIOS.COM](http://MKSSTUDIOS.COM)

City of Royal Oak

ROYAL OAK  
DOWNTOWN PARK

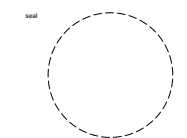
211 S Williams Street  
Royal Oak, Michigan 48067

CIVIL ENGINEER

**FLEIS & VANDENBRINK**  
27725 Starsbury Blvd Suite  
195 Farmington Hills, MI 48334  
p 248.536.0080

ARCHITECT  
**DPAW**  
117 S Shelby St  
Louisville, KY, 40202  
p 502 582.8295

**CHECK SET**  
Not For Construction

[illegible]

issue date  
**08.26.2020**

project number  
**k19100**

sheet name

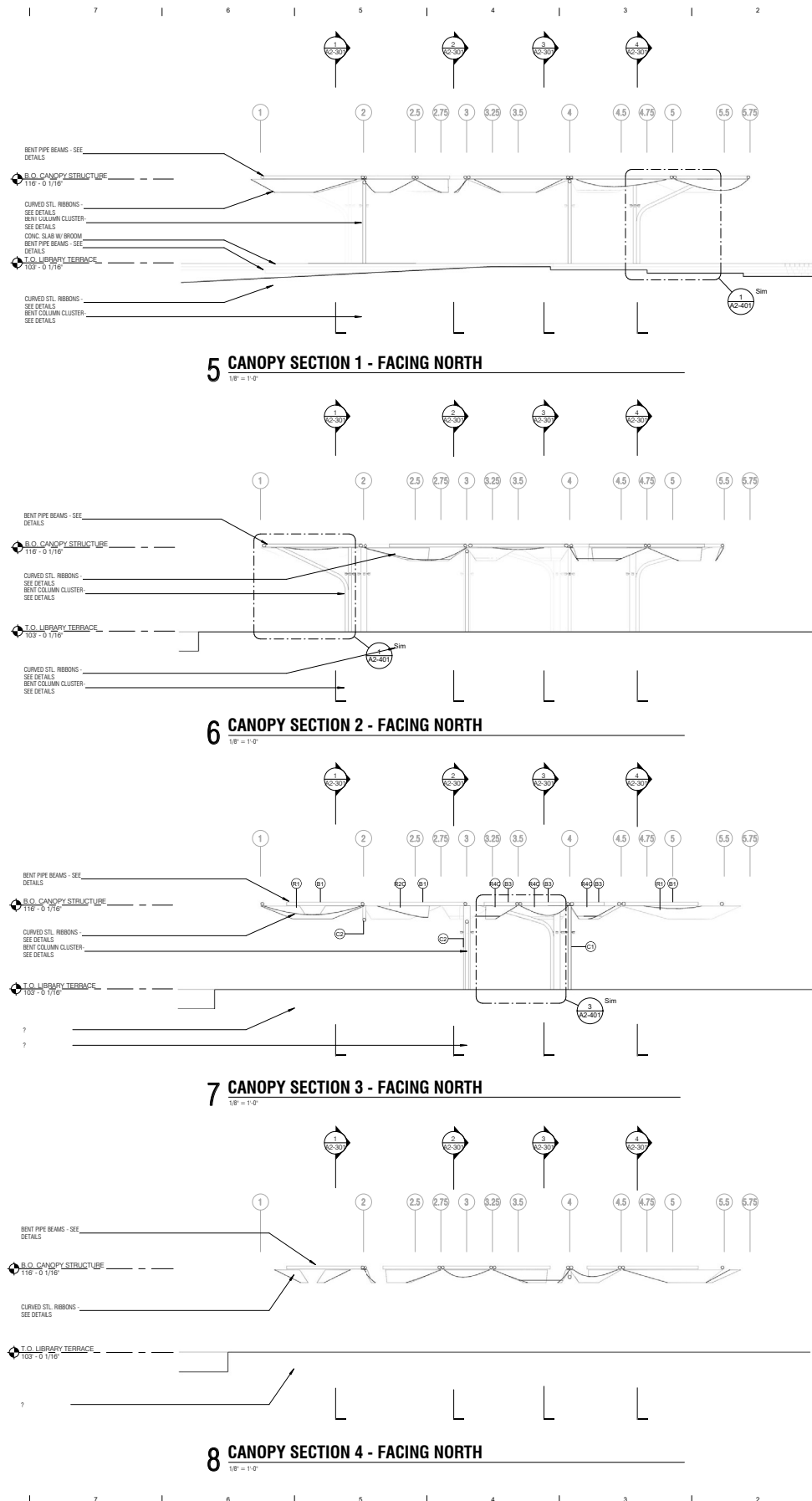
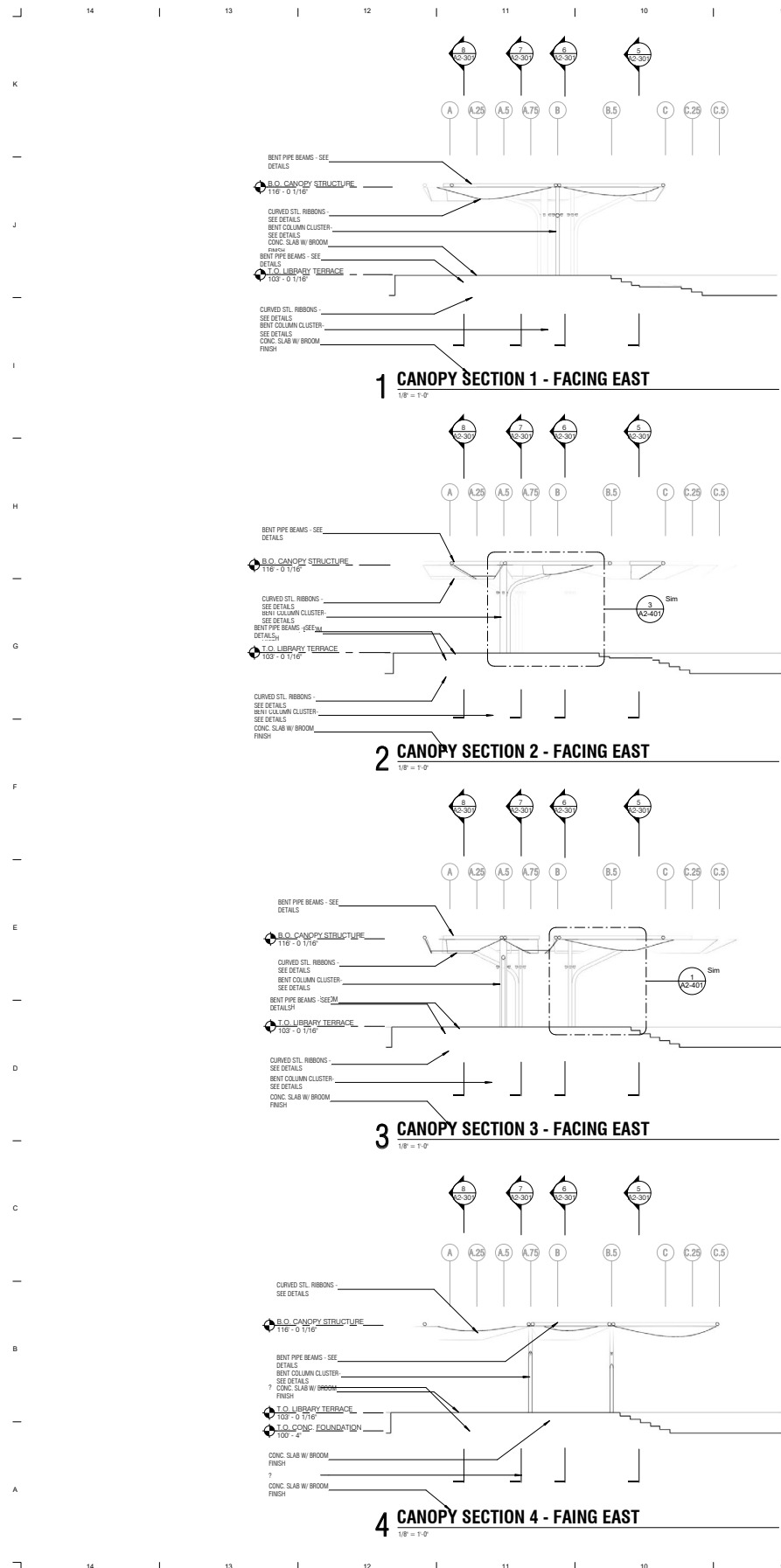
CANOPY PLANS

sheet number  
**A2-101**









607 WEST MAIN STREET #400  
LOUISVILLE, KENTUCKY 40202  
502 6941416 MKSKSTUDIOS.COM

211 S Williams Street  
Royal Oak, Michigan 48067

**FLEIS & VANDENBRINK**  
27725 Stansbury Blvd Suite  
196 Farmington Hills, MI 48334  
p 248.536.0080

**DPAW**  
117 S Shelby St  
Louisville, KY, 40202  
p 502 582-6295

revision	date	issued
----------	------	--------

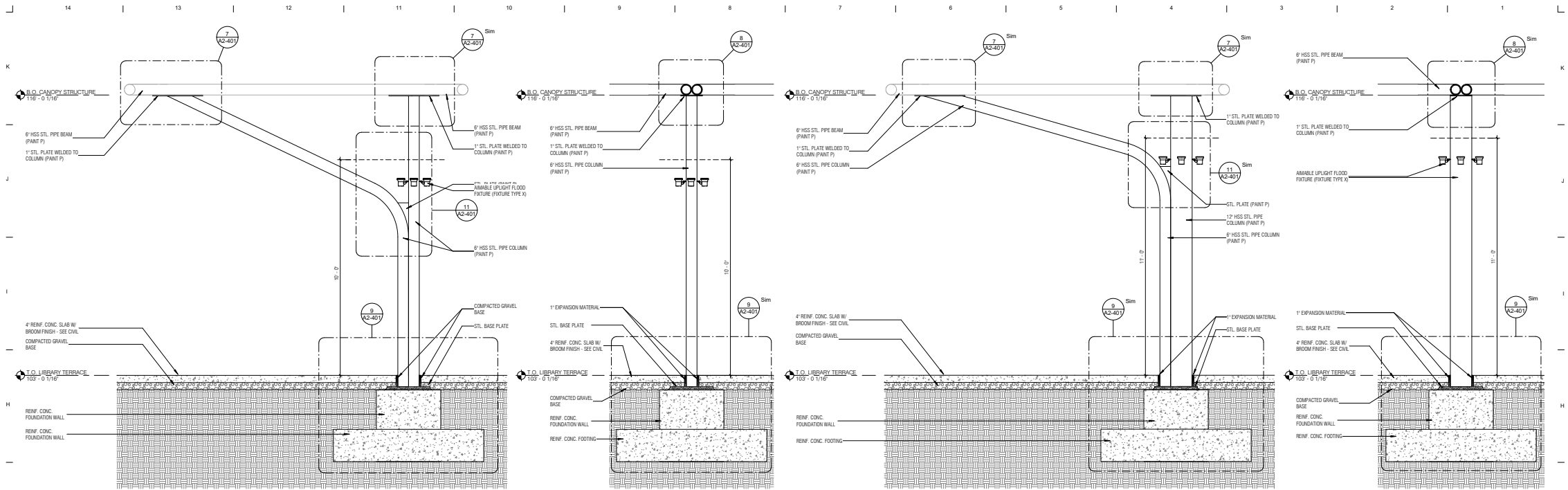
The seal of the University of Cambridge, featuring a circular design with a cross and four lions.

sheet name

CANOPY SECTIONS

A2-301



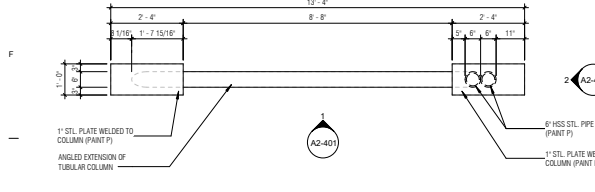


1 CANOPY COLUMN C1 - ELEVATION 1  
1/2" = 1'-0"

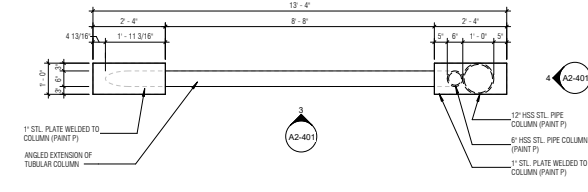
2 CANOPY COLUMN C1 - ELEVATION 2  
1/2" = 1'-0"

3 CANOPY COLUMN C2 - ELEVATION 1  
1/2" = 1'-0"

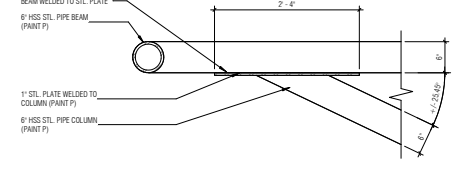
4 CANOPY COLUMN C2 - ELEVATION 2  
1/2" = 1'-0"



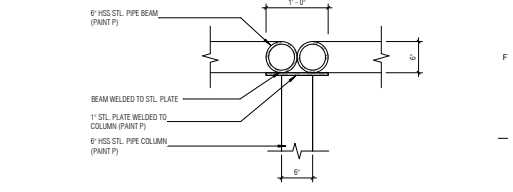
5 CANOPY COLUMN C1 - PLAN  
1/2" = 1'-0"



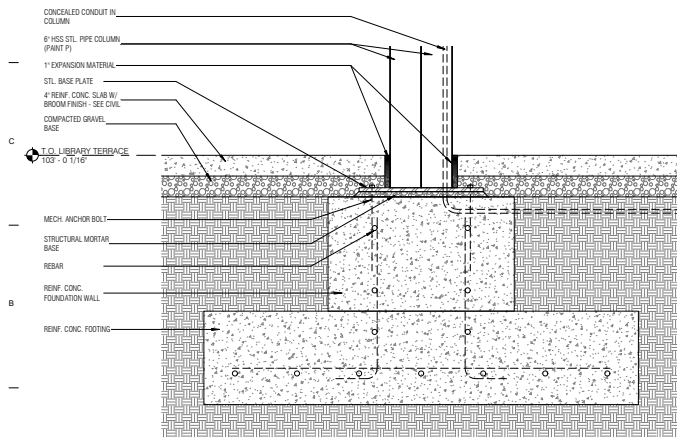
6 CANOPY COLUMN C2 - PLAN  
1/2" = 1'-0"



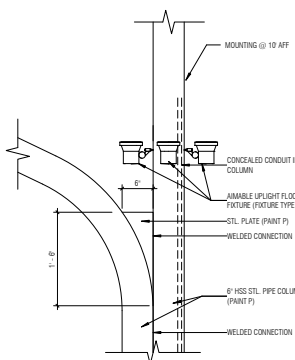
7 CANOPY COLUMN TOP PLATE - ELEVATION DETAIL (TYP.)  
1" = 1'-0"



8 CANOPY COLUMN TOP PLATE - SECTION DETAIL (TYP.)  
1" = 1'-0"



9 CANOPY COLUMN FOOTING - SECTION (TYP.)  
1" = 1'-0"



11 CANOPY COLUMN CONNECTION DETAIL (TYP.)  
1" = 1'-0"

**MKSK**

LANDSCAPE ARCHITECTURE + URBAN PLANNING

607 WEST MAIN STREET #400  
LOUISVILLE, KENTUCKY 40202  
502.694.1416 MKSKSTUDIOS.COM

City of Royal Oak

**ROYAL OAK  
DOWNTOWN PARK**

211 S Williams Street  
Royal Oak, Michigan 48067

CIVIL ENGINEER

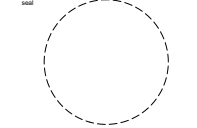
**FLEIS & VANDENBRINK**  
27725 Stonybrook Blvd Suite  
196 Farmington Hills, MI 48334  
p 248.536.0080

ARCHITECT

**DRAW**  
117 S Shelby St  
Louisville, KY 40202  
p 502.582.0205

**CHECK SET**  
Not For Construction

revision	date	issued



Issue date: 06.28.2020 project number: 4151100

sheet name: CANOPY COLUMN DETAILS

sheet number: **A2-401**







