

**Approval of Design For
Lawson Park, Franklin Park and
South-End Traffic Diverters**

November 2, 2020

The Honorable Mayor Fournier and
Members of the City Commission:

The planning year 2020 community development block grant (CDBG) annual action plan includes funding to design and construct improvements to Lawson Park, Franklin Park and the south-end traffic diverters depending on bid results.

Since July 1, 2020¹, staff has been working with the city's engineering consultant on the design drawings. The designs are based upon public input from the December 5, 2019 parks and recreation advisory board meeting and the resolutions adopted by the board at their January 9, 2020 meeting (Attachment 1).

Staff is seeking the city commission's approval of the design drawings (Attachment 2) prior to developing and releasing the bid packet in January 2021.

If the city commission concurs with the design, the following resolution is recommended.

Whereas, the city commission has reviewed the design for improvements to Lawson Park, Franklin Park and the south-end traffic diverters; and

Whereas, the city commission has determined the design satisfies the concerns and fulfills expectations expressed by the nearby residents; and

Whereas, the design includes features recommended by the parks and recreation advisory board.

Be it resolved, the city commission hereby approves the submitted design and directs staff to develop and release the construction bid packet based on the approved design.

Respectfully submitted,

Joseph M. Murphy
Director of Planning

Approved,



Paul J. Brake, ICMA-CM, CEcD
City Manager

2 Attachments



City of Royal Oak
Recreation Department
1600 North Campbell Road
Royal Oak, MI 48067
248-246-.3180

Minutes
Parks, Recreation and Senior Services Advisory Board
Thursday, January 9, 2020 at 7:00p.m.
Leo Mahany/Harold Meininger
Senior Community Center
Royal Oak, MI 48067

Meeting called to Order 7:03 PM

Members Present: Sarah Kindinger, Tim Ciechorski, Commissioner Melanie Macey, Mike Ripinski, Ilene Orlanski, Maya Lane Harris, Paul Kanan, Crystal Chow,

Also, Present: John Fedele, Superintendent of Recreation, Aaron Filipski Director Public Works and Recreation, Greg Rassel Director Public Works and Recreation

Members Absent: Nicole McEachern, Stephanie Comptois,

I. **Approval of Minutes:** Motion by Paul, Second by Mike, unanimously approved.

II. **City Commission Comments:**
Strategic planning coming up, set goals for the upcoming year. Any input please e-mail board.

III. **Public Comment:**
Mike Thompson – Lawson Park – excited to see the upgrades at the park as well as franklin park. Great ideas thrown at last meeting. Small pavilion and update basketball court and fitness area to replace volleyball court. Franklin Park – convert to one tennis court and expand playground and help the drainage. Diverters: Trying to get more planting and screening.

Richard Dore – Second not having paved road by volleyball court on Lawson Park, need to do exercise equipment in place of volleyball court. Berms need work, an additional planting would be great, less maintenance. Re-do the basketball court.

Attachment 1

Sue Galvert- All in favor of everything presented, refreshing baseball diamond, providing safe bleachers. Berms, agree with additional planting and low maintenance.

End Public Comment

IV. **Business:**

a. Decisions on CDBG Park Improvements for Lawson Park and Franklin Park:

Franklin

Crystal: Franklin Park, seen it used as a tennis court understand flooding issue, heard playground equipment for younger group because it is enclosed and more multi age activities for Lawson Park.

Mike: One thing consistent with our discussions and public comment is relief of flooding to Franklin and Lawson Park, more so Franklin. All for putting money into playgrounds and user-friendly parks.

Sarah: One tennis court (re-do the whole thing) at Franklin and remaining playground equipment, public in favor of fencing around tennis court at Franklin and recommends updating the fencing.

Tim: Tennis court replaced at Franklin, and playground equipment

Ilene Orlanski: No comment

Commissioner Macey: Install only one tennis court, playground equipment for younger groups (2-5), refresh with dino in the sand or remove, more benches in park.

Paul: Support replacing tennis court with one and more benches and playground equipment.

Mike Ripinski makes a motion for one tennis court, new playground equipment and benches in the park, improve drainage, second by Sarah unanimously approved.

Lawson

Commissioner Macey: Not add parking, adding at least 5-12 playground, no 2-5 playground, small shelter, resurface basketball court, recondition baseball field (infield and outfield), new outdoor fitness equipment to replace volleyball court, put a path to loop around contingent on not interfering with baseball field, remove unhealthy trees, shrubs and ground cover, improve the roadways on north and south part of park, more benches (around basketball court)

Paul Kanan: only thing I add is drainage improvements

Ilene Orlanski: Drainage

Tim: Nothing new

Sarah: Nothing new

Mike: Emphasize the opposition of paving Parent and Dondero street.

Attachment 1

Crystal: No need for extra parking, basketball does get used, favor of resurface, play kickball on baseball field, turn volleyball court into something else. Run for brews is to wrap around Lawson Park and favor of adding it to park. Barbeque/Shelter would be useful for area. Play space for older age groups.

Sarah motions for older group playground, shelter, resurface basketball court, recondition baseball field, volleyball into fitness equipment, improve drainage and add benches and remove existing play equipment, fix landscaping, paths contingent on baseball field, second by Commissioner Macey unanimously approved.

Joseph Murphy: Now that we have these recommendations we can start talking about budgeting and estimates.

Commissioner Macey: What are the updates for this year's CDBG?

Greg Rassel: Fulton, Wendtland, and Huntington Woods will get PIP in Spring, Sullivan Park is mostly done besides the PIP fall zone.

b. Normandy Oaks Park Update

- John states that due to the weather there has not been much movement, but staff has given Anglin a deadline to complete the pavilion, playground, splashpad, perimeter trails and parking lot complete prior to the first week of July.

c. Downtown Park Update

- Downtown Park is meeting on January 15. They will be voting on the movement of the veteran's memorial and what design they prefer, "Glade A or "Glade B"
- Sarah - specs did not include restrooms, initial discussion of library covering (outside of budget)

d. AARP Update

- Sarah – focus group on Saturday January 11th. Still looking for scribes, 70 people signed up so far. Need 7-10 facilitators and scribes. 9 am – 12 pm at the Senior Center. Next step, compiling results and getting in front of City Commission in February also need folks for work groups

V. **Items not on the Agenda:**

Leprechauns Update

Ilene Orlanski – took a picture of Tim's Kitchen Dream list, moves to fund these dream list.

Greg Rassel – there is no budget set to buy food or products based on donations and the funding of the kitchen. Need to talk to Paige and we will have Paige reach out to Ilene.

Ilene Orlanski – since doing strategic planning maybe having a budget for this.

Attachment 1

Mike: Royal Oak Optimist Club having fundraiser on Astro Lanes Madison Heights January 26th, "Bowlabration" at 11:30 – 2:30 pm. Acknowledge Mr. Rassel and all his work and leadership.
Tim: Thanks to Greg for all the service

VI. **Upcoming Events**

Downtown Park Task Force Meeting – January 15, 2020

Next Meeting: Thursday February 6, 2020 at 7:00 p.m.

Adjourn: Motion moved by Ilene, Second by Mike, passed unanimously at 8:09 pm.

Respectfully Submitted,

John Fedele

John Fedele, Superintendent of Recreation

Approved,

Paul Kanan

Paul Kanan, Secretary



City of Royal Oak
Recreation Department
1600 North Campbell Road
Royal Oak, MI 48067
248-246-.3180

Minutes
Parks, Recreation and Senior Services Advisory Board
Thursday, December 5, 2019 at 7:00p.m.
City Hall, Room 315
211 S. Williams St.
Royal Oak, MI 48067

Meeting called to Order 7:00 PM

Members Present: Sarah Kindinger, Tim Ciechorski, Commissioner
Melanie Macey, Crystal Chow, Paul Kanan, Nicole McEachern, Mike
Ripinski, Stephanie Comptois

Also, Present: John Fedele, Superintendent of Recreation, Greg Rassel,
Director of Public Works and Recreation, Aaron Filipski, Director of Public
Works and Recreation

Members Absent:, Ilene Orlanski, Maya Harris

I. **Approval of Minutes:** Motion by Mike Ripinski, Second by Sarah
Kindinger. Passed unanimously.

II. **City Commission Comments:**
City tax bill has info about lead advisory notice. Golf course netting was
approved by City Commission.

III. **Business:**

a. Upcoming CDBG Project – Traffic Diverters & Parks

- Joseph Murphy from planning presents proposed plans for
berms using CDBG funds on E. Hudson Ave, E Harrison Ave,
Batavia Ave, Irving and E. Parent Ave and Dondero Ave. As well
as proposed plans for the berms, Joseph explained the proposed
plans to upgrade the two parks within the area, Lawson Park and
Franklin Park.
- Options for improvements to berm include but limited to:
 - Replacing wood bollards, restoring the curbline, rain
gardens, remain as is, create more maintenance friendly
berms.
- Options for Lawson Park improvements

Attachment 1

- Unimproved northern roadway remain as is or create new concrete/asphalt roadway incorporating parking spaces
- New playground equipment and picnic shelter
- Resurface basketball court/new multi-use game area
- Recondition existing baseball field
- New outdoor fitness equipment to replace volleyball court
- Options for Franklin Park improvements
 - No change
 - Eliminate one tennis court and re-do the other
 - New playground

IV. **Public Comment:**

Joe Hughner – Volleyball court rarely used, multisport area good idea for Lawson Park. Fitness equipment good idea, both age group playground. Do 1 tennis court and 1 basketball court at Franklin.

Jim Ellison – Tennis courts at Franklin need to be completely re-done, reduce to 1 tennis court, suggest all age playground. Opportunity with diverters to incorporate green infrastructure. Make diverters look apart of the neighborhood not just placed there.

Brandon Cowell – Nice to see Lawson Park invested. Would like to see berms maintained better, natural plants etc. Turn volleyball court into exercise equipment, south portion of park would be better for parking lot, fix tennis courts at Franklin.

Arthur Armstrong – Would like to see diverters gone. No stop signs around parks. Would like to see Franklin Park gone.

Ross O'Hara – Lawson Park basketball court empty because of condition. Would like to see a new basketball court

Josh Fisher – exception of baseball field, majority use of Lawson Park are young kids and dogs. Funds used to improve what already there, simplicity is best, rip out baseball court.

Bill Goober – would like north end pavement to remain as dirt road. Red clay mix for the baseball field. Prefers fitness equipment over volleyball equipment.

Lynette Kip – 3rd playground since living there, focus on a playground that will last. Likes fitness equipment over volleyball court. Outfield needs to be reconditioned. Basketball court could get more use if fixed. Franklin Park most people use just 1 tennis court.

Attachment 1

Kathy Condent – Lawson Park used for dog walking, kids biking. Both age group of playground equipment – keep simple, Picnic shelter replace volleyball court.

Dennis Cook – Franklin Park tennis courts need to be repaired, make park suitable for young kids, lack of parking there. Not in favor of basketball courts at Franklin

Tim Hobert – new kids' area at Franklin Park. Repair 1 tennis court and a roller blade court at park. Open berms up.

Doug Tannis -berm vacating property – biggest issue with city maintaining berm is that they don't. Create a light pollution berm. If property was vacated, they would have additional questions.

Melissa Brough – leave road on north end of Lawson Park alone. Concern would be overnight parking lot. Recondition baseball field, pull volleyball courts, new play structure.

John Duff – express support of enhancement of berms. Likes playstructure idea, get rid of volleyball court. Supports install of shelter would increase use and develop ballpark area.

John Honeyman -try to improve berms as if they belong and aren't just placed there. Raise level of curb

Ron Arnold – opportunity to represent uniform plan for berms. All berms should be treated the same way

Scott Langdorf – replace volleyball court with fitness equipment, improve basketball area. Franklin Park tennis courts need to be repaired. Likes multi-age playground

Mike Thompson – prefer dirt road at Lawson Park. Create a green wall to eliminate light pollution. Improve baseball field, outdoor fitness equipment to replace volleyball court

Marty Buchanon – quality and longevity, not catchy or fancy equipment in the parks. Should concrete south side. Don't do budding out curbs

Nancy Poproski – Possibility with berm at Batavia being reopened. Nice to add as many evergreens as possible. Nice to keep height at other berms.

End of Public Comment

Discussion from board regarding item "a."

Attachment 1

Mike Ripinski – states that there are clear areas discussed by the residents. Firm on 1 court at Franklin, proper drainage at parks, multi age playground, eliminate volleyball court.

Commissioner Macey – Franklin park only 1 tennis court, good place for little kids. Not in favor of small age play structures but Franklin is a good spot for it. If baseball field gets improved, going to have a lot of traffic. Resurface basketball courts.

Nicole McEachern – makes a motion to recommend writing thoughts down and come back to January's meeting with recommendation.

- Second by Mike
- Unanimously approved.

b. Senior Service Aging in Place Task Force Update

- Sarah Kindinger states that there is 1 more session/focus group on January 11th. Present a plan in 6 months request further direction from City Commission.

V. **Items not on the Agenda:**

Mark Twain Dog Park fence has been installed

Batting cage improvements have been approved by staff back in 2017 no further action needed.

John states we need a motion to move January 2nd meeting to January 9th.

Commissioner Macey motions, 2nd by Nicole McEachern. Passed unanimously.

Commissioner Macey – subcommittee report, Nicole made a comprehensive spreadsheet between Royal Oak and other cities. There are some places with holes in recreation but not gaping holes. Talked about getting the word out more and creating a Facebook page. Some ideas would be good for the library. Start thinking about long-term planning as far as upgrades to golf course club house and recreational facility as department is running at full capacity.

Nicole McEachern adds that with the amount and variety of programming based on staffing is great. Troy has multiple staff; Royal Oak has 3.

Commissioner Macey – at the city liaison meeting, schools will be rolling out no verbal signs for communication. May be a good idea for parks or senior center.

VI. **Upcoming Events**

Attachment 1

Jingle Fest – December 14th

Next Meeting: Thursday January 9, 2020 at 7:00 p.m.

Adjourn: Motion by Sarah Kindinger, second by Nicole McEachern. Pass unanimously at 9:25 pm.

Respectfully Submitted,

John Fedele

John Fedele, Superintendent of Recreation

Approved,

Paul Kanan

Paul Kanan, Secretary



A- KOMPAN JUNGLE GIANT



B- ULTRA SITE BIKE RACK



C- KOMPAN UNIVERSAL CAROUSEL



D- KOMPAN SWING 2.5 M HIGH, 1.0 M ROPE SEAT



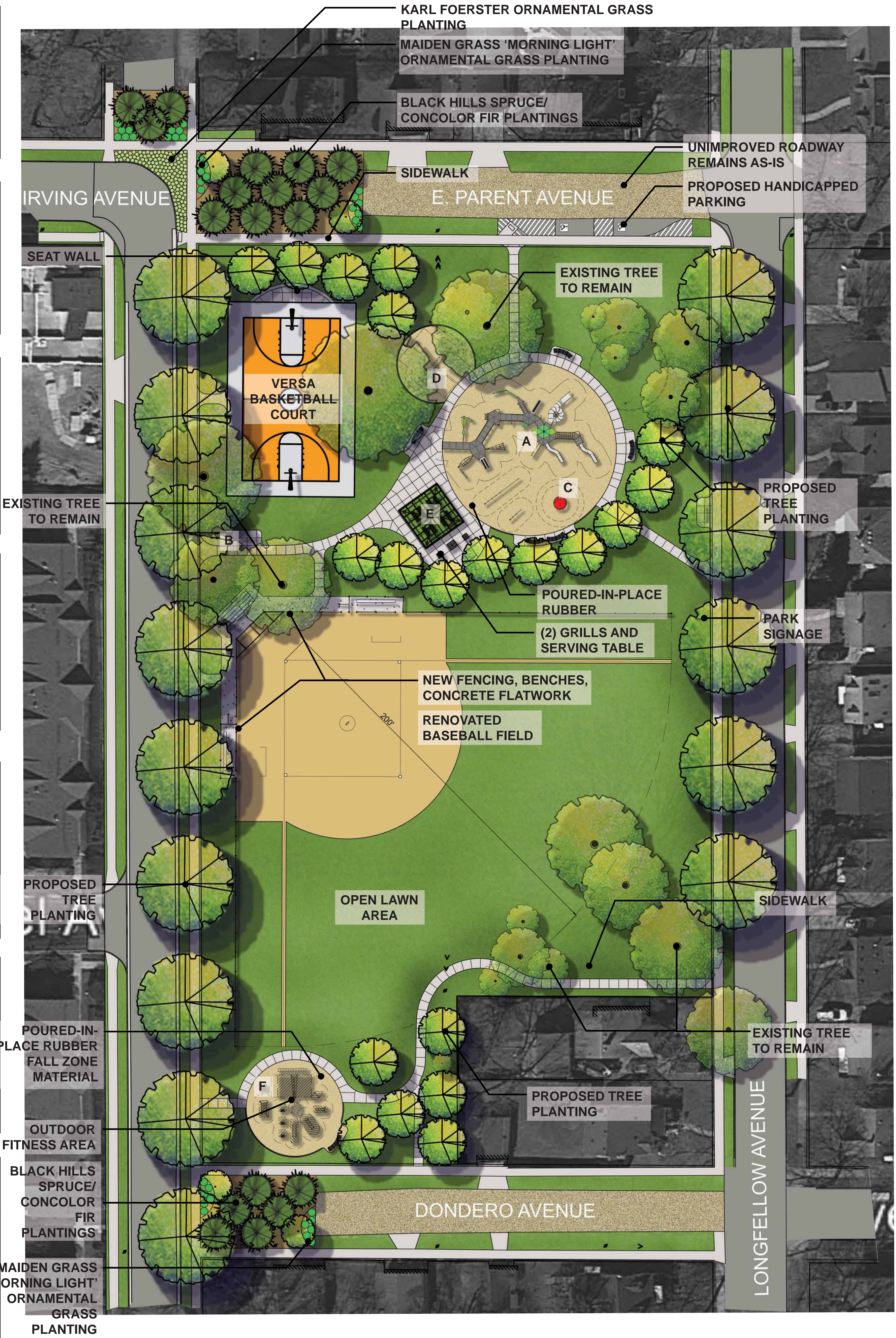
E- 24' X 24' ALL STEEL SHELTER



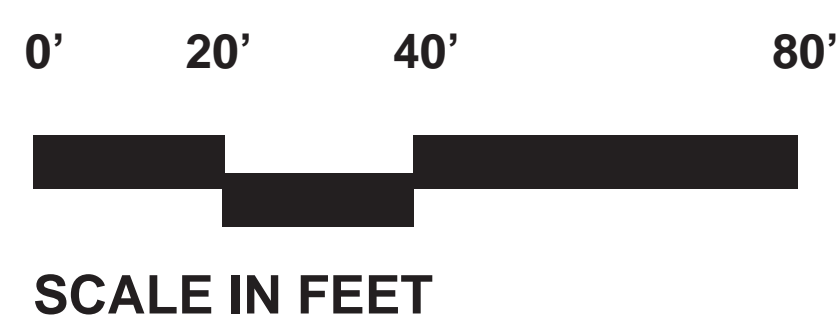
F- KOMPAN STREET WORKOUT COMBI 5



LANDSCAPE FORMS PLEXUS II BENCH



LAWSON PARK
CDBG PARK MASTER PLAN
CITY OF ROYAL OAK, MICHIGAN



DATE
10.27.2020
PROJECT NO.
844840



Triple Tower, Cognitive/Creative

PCM300108



This fantastic triple play unit will inspire young children to play again and again, stimulating their physical, social and thinking skills. Their muscle and motor skills are in full use as they climb to the top and slide or glide in a rotating movement to the ground, again and again. The mesh net provides a varied climbing experience. It takes cross-coordination skills

that enhance children's abilities to use both sides of their brain. This supports the internal structures that enable reading and thinking. This holds true for the tunnel, too: the crawl and the resonance from the hollow window make for a fun journey. The two slides support social interaction when children slide together. Under the deck, a wealth of manipulative, musical and

number play panels stimulate explorative and dramatic play. The panels support logical thinking skills and cooperation.

1 / 9/27/2020

Triple Tower, Cognitive/Creative

PCM300108

PHYSICAL
Joy of movement:
motor skills, muscle, cardio
and bone density

SOCIAL-EMOTIONAL
Joy of being together:
teamwork, tolerance and
sense of belonging

COGNITIVE
Joy of learning:
curiosity, understanding of causal
relationships and knowledge of the world

CREATIVE
Joy of creating:
co-creation and experimenting
with materials

BALANCE
To balance is to stay upright when walking or standing on a surface that makes this challenging (e.g. a wobble, inclined, or narrow surface).

BOUNCE
To bounce is the act of bouncing on a responsive, flexible, elastic or tensile surface.

CLIMB
To climb is the act of moving upwards, cross-coordinating arms and legs, on a vertical or inclined surface or net.

CONSTRUCT
To construct is the act of creating new patterns, shifting items or materials to new positions or constructing with materials that can be transformed or manipulated.

CRAWL
To crawl is the movement of moving forwards or backwards, cross-coordinating arms and legs, on a horizontal or slightly inclined surface.

DRAMATIC PLAY
Dramatic play is motivated through play items that stage a frame, place or environment for acting out make believe or role play scenarios.

GLIDE
To glide is the act of moving from one point to another without shifting the feet, in a horizontal or vertical movement, in a seated, lying or standing position, letting gravity do the work.

HANG IN ARMS
To hang in arms is the act of carrying the body with the hands or arms, possibly to traverse to another platform or play item.

JUMP
To jump is the act of jumping up or down on a hard surface.

PULL
To pull is the act of pulling an item towards you or you towards an item with one or both hands, or possibly using the entire body.

PUSH
To push is the act of pushing an item away from you with one or both hands, possibly with the entire body.

ROCK
To rock is the action of rocking back and forth, or sideways, on e.g. a piece of spring equipment.

ROTATE
To rotate involves a vertical or horizontal slower paced turn of the body, facilitated by a piece of equipment.

RULES PLAY
Rules play is motivated through play items that suggest games with rules, cooperation and team work, e.g. tic-tac-toe, timers or ball games.

SENSORY
To sense is the act of taking in information with the sensory system: seeing, feeling, hearing or sensing with the body.

SLIDE
To slide is the act of moving fast downwards seated on a slide.

SOCIALIZE
To socialize is the act of meeting, communicating or cooperating in an activity that stimulates and facilitates social interaction.

SPIN
To spin involves a fast, repeated horizontal or vertical turn of the body on a piece of equipment that facilitates the movement.

SWAY
To sway is the movement of swaying back and forth, or around, lying, seated or possibly standing, in a pendulum or circular movement, e.g. on a hammock or on a rope.

SWING
To swing is the movement of swinging back and forth, or in circular movement, seated, standing or lying, in an unobstructed etc.

WONDER
To wonder is motivated through play items that make children need and use their logical, abstract or creative thinking skills, as well as their memory.

Data is subject to change without prior notice.

Triple Tower, Cognitive/Creative

PCM300108

Wide slide
Physical: sliding develops spatial awareness and sense of balance. Furthermore, the core muscles are trained when sitting upright going down.
Social-Emotional: empathy stimulated by turn-taking.
Cognitive: young children develop their understanding of space, speed and distances when sliding down quickly.

Clock panel
Social-Emotional: cooperation with others on turning wheel, turn-taking, communicating with children on the other side.
Cognitive: learning about numeracy and time in a tangible way.
Creative: leaving your mark on the playground when setting clock pointers differently.

Climbing net
Physical: children develop cross-body coordination and muscle strength. The big meshes allow for climbing and crawling through, supporting proprioception and spatial awareness.
Social-Emotional: the big meshes allow for more children to sit together and talk.

Tunnel
Physical: the children crawl through the tunnel, developing motor skills such as coordination and proprioception.
Social-Emotional: cooperation and turn-taking when passing one another.

Turn desk and sound creator
Social-Emotional: cooperation, turn-taking.
Cognitive: logical thinking, understanding numeracy.
Creative: creating sounds when the spheres run through grooves.

Bubble window
Social-Emotional: invites interaction between outside and inside.
Cognitive: distorts the sound of the voice, developing logical thinking.

Single slide
Physical: sliding develops spatial awareness and sense of balance. Furthermore, the core muscles are trained when sitting upright going down.
Social-Emotional: empathy stimulated by turn-taking.
Cognitive: young children develop their understanding of space, speed and distances when sliding down fast.

Music panel
Physical: fine motor skills and hand-eye coordination.
Social-Emotional: invites social interaction and co-creation for more children, on both sides.
Cognitive: understanding of cause and effect when striking tubes and creating sound.
Creative: leaving a sound and tonality mark, creating tunes.

Data is subject to change without prior notice.

4 / 9/27/2020

FRANKLIN PARK CDBG PARK MASTER PLAN CITY OF ROYAL OAK, MICHIGAN



DATE
10.27.2020
PROJECT NO.
844840

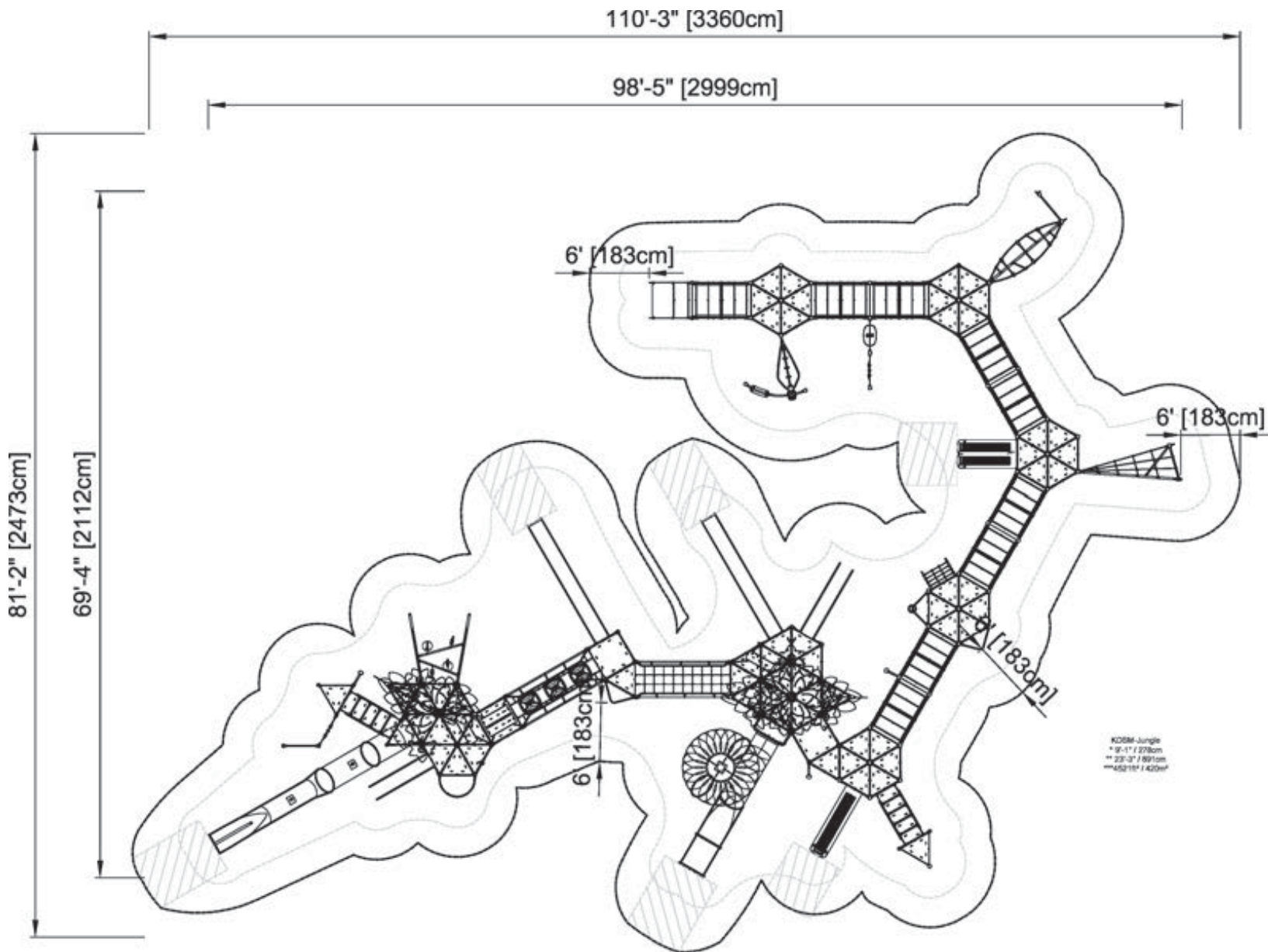


KDSM_JUNGLE_GIANT_US
JUNGLE GIANT



Look out from beneath the waterfall, run from the tiger, or climb to the top of the trees. For every child, the jungle is an adventure waiting to happen. Playing here will inspire dramatic play, communication and physical activity. The straight tube slide is a rush thanks to the high-speed ride. The spiral tube slide further stimulates the understanding of space, speed and distance due to the 360-degree experience. The leaves, branches and flowers on the roof and posts make the jungle a multi-coloured and magnificent sight for children and adults.
Final designs and data depend on regional safety standards.

Product Line	Play Systems
Category	GIANTS Inspirational Concepts
Age from	5+
Total height (CM)	891



* = Highest designated play surface.
** = Total height of product.

Weight/heaviest parts	kg.	Installation (Manpower)	Persons
Concrete required	NaN m3	Installation (Hours)	Hours
Foundation amount/footing	NaN	Excavation	NaN m3





CONCOLOR FIR



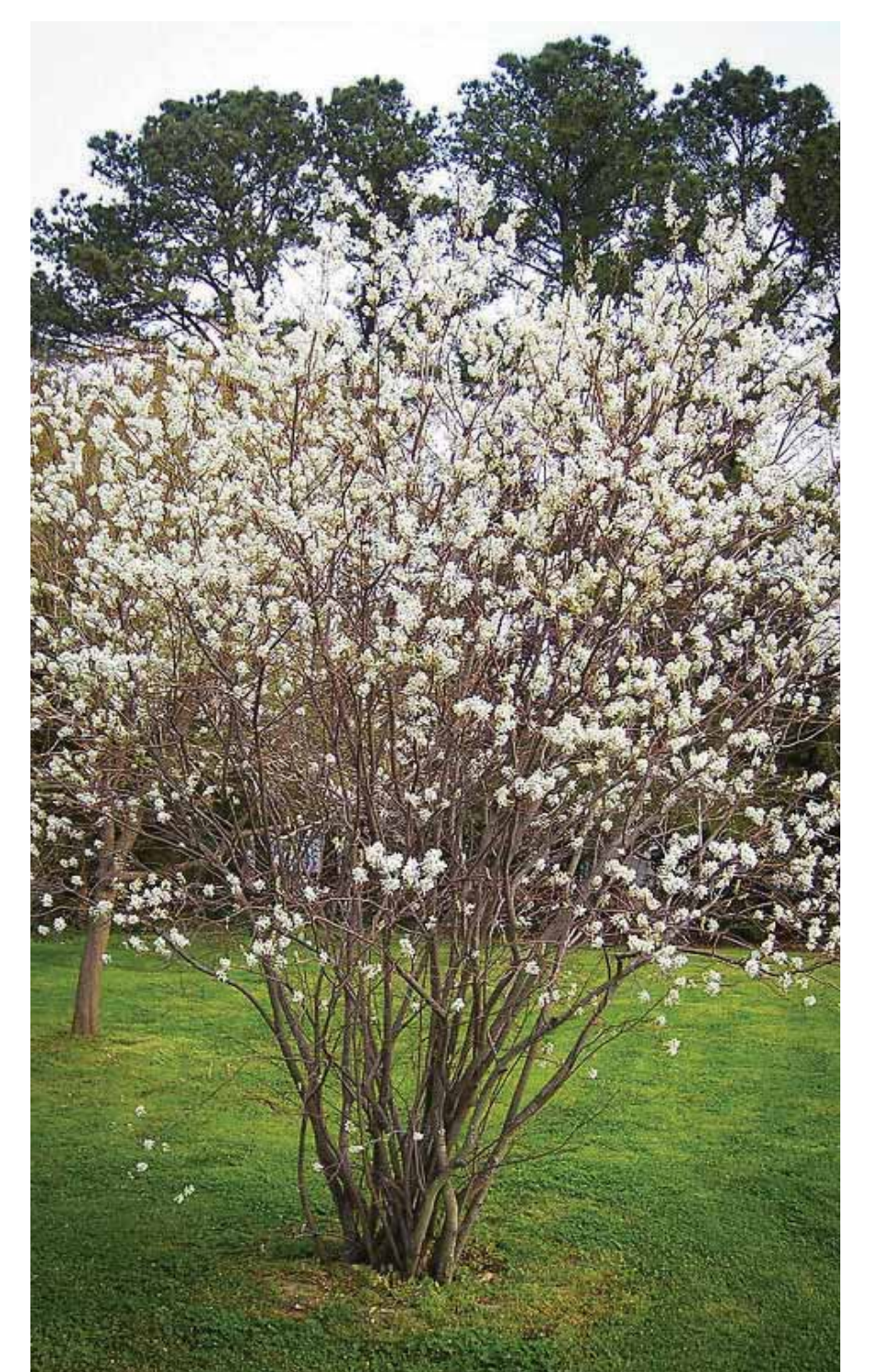
BLACK HILLS SPRUCE



MORNING LIGHT MAIDEN GRASS



KARL FOERSTER REED GRASS



SERVICEBERRY

DIVERTER AT BATAVIA & E. PARENT AVENUE
CDBG PARK MASTER PLAN
CITY OF ROYAL OAK, MICHIGAN



DATE
10.27.2020
PROJECT NO.
844840





CONCOLOR FIR



BLACK HILLS SPRUCE



MORNING LIGHT MAIDEN GRASS



KARL FOERSTER REED GRASS



SERVICEBERRY

DIVERTER AT HARRISON AVE. & E. HUDSON AVENUE
CDBG PARK MASTER PLAN
CITY OF ROYAL OAK, MICHIGAN



DATE
10.27.2020
PROJECT NO.
844840

