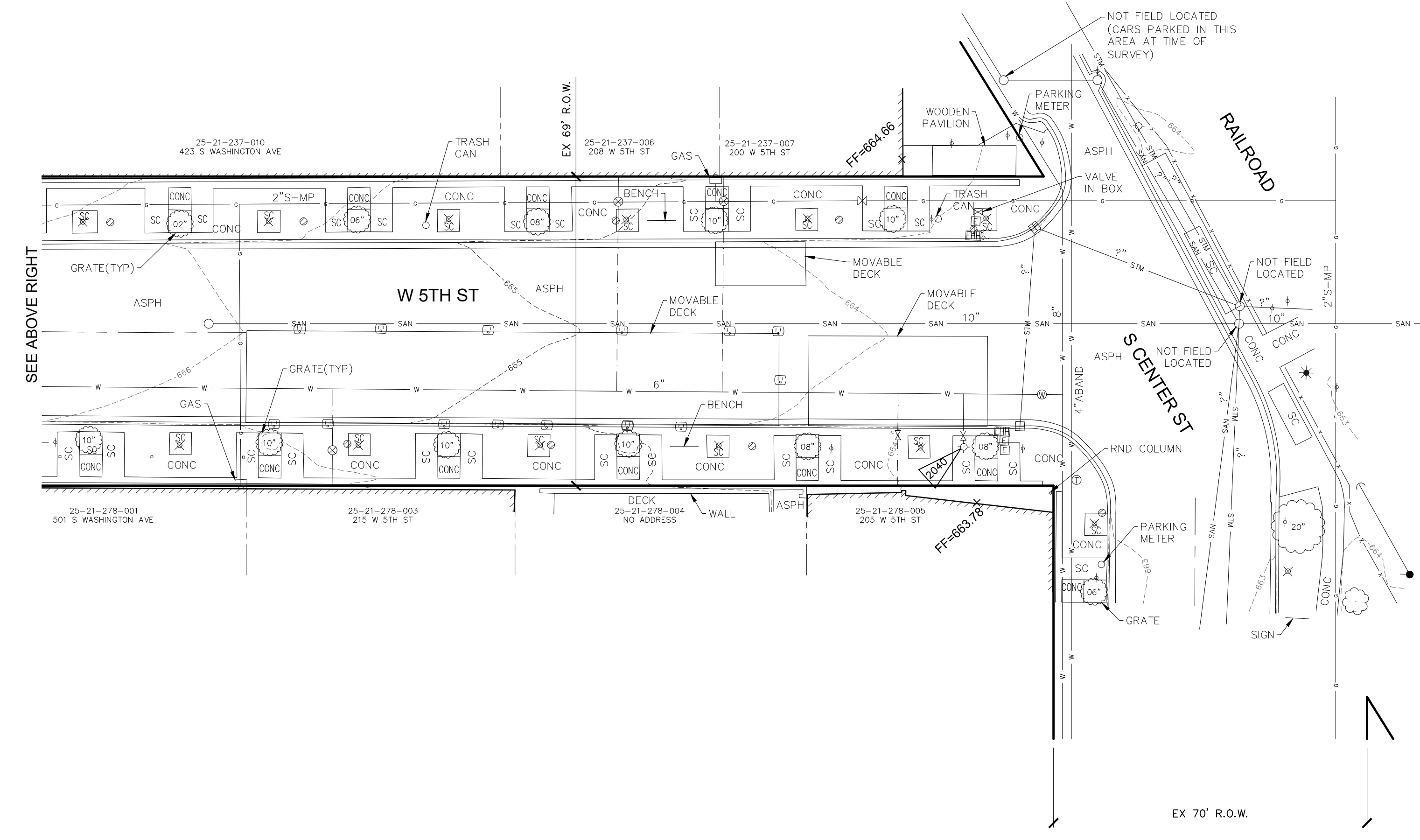


BM 1283 669.66
MAG NAIL IN NNW FACE OF POWER POLE IN ALLEY NORTH OF 505 LAFAYETTE AT EAST END OF ISLAND (NAVD 88)

BM 1509 669.41
ARROW AT TOP OF HYDRANT, SW CORNER OF S WASHINGTON ST AND ALLEY (NAVD 88)

BM 2040 666.08
ARROW AT TOP OF HYDRANT, SW CORNER OF S CENTER ST ND 5TH ST (NAVD 88)



- NOTES:
1. THE LOCATION OF UTILITIES DEPICTED ON THIS DRAWING WERE DETERMINED FROM ON-SITE OBSERVATION AND FROM RECORDS PROVIDED BY OTHERS. SOME UTILITIES MAY NOT BE SHOWN, BUT ARE PRESENT. UTILITIES MAY NOT BE IN THE EXACT POSITION SHOWN. BEFORE CONSTRUCTION OR ANY SUBSURFACE WORK CONTACT MISS DIG AND EXERCISE CAUTION.
 2. THE PROVIDED PDF MAP FROM CENTURY LINK COULD NOT BE OPENED.
 3. PER THE MAPS AND INFORMATION PROVIDED BY COMCAST, THE UNDERGROUND LOCATION COULD NOT BE PLOTTED.
 4. THE PROVIDED PDF MAP FROM DTE COULD NOT BE OPENED.
 5. PER EVERSTREAM, THEY DO NOT HAVE UTILITIES THAT EXIST WITHIN THE PROJECT AREA.
 6. PER THE MAPS PROVIDED BY FONORLA, THEIR UTILITIES ARE 8.5 FEET WEST WESTERLY RAIL OF RAILROAD TRACKS.
 7. PER THE MAPS PROVIDED BY ITC, A HIGH VOLTAGE ELECTRICAL TRANSMISSION LINE EXISTS ON THE WEST SIDE OF S WASHINGTON AVE. NO DIMENSIONS GIVEN. COULD NOT PLOT.
 8. AT THIS TIME, NO UTILITY MAPS HAVE BEEN RECEIVED FROM TELECOM, WHO INDICATED THEY DO HAVE UTILITIES IN THE PROJECT AREA.
 9. ACCORDING TO WINDSTREAM, HEY DO NOT HAVE UTILITIES THAT EXIST WITHIN THE PROJECT AREA.
 10. PER THE MAPS PROVIDED BY WOW CABLE, THEIR UTILITIES COULD NOT BE PLOTTED.
 11. FLEIS AND VANDENBRINK ENGINEERING, INC. HAS NOT REVIEWED THIS PROJECT FOR ENVIRONMENTAL CONCERNS, SOIL CONTENT, FLOOD ZONE OR WETLAND CONCERNS EXCEPT AS SHOWN.
 12. BEARINGS ARE BASED ON: MICHIGAN STATE PLANE, SOUTH ZONE, NAD 83
 13. THE VERTICAL DATUM USED FOR THIS PROJECT IS: NAVD 88
 14. RIGHT OF WAY LINES AND PROPERTY LINES ARE AN APPROXIMATE BEST FIT.
 15. SC = STAMPED CONCRETE
 16. ANY ELECTRONIC REPRODUCTION OF THIS SURVEY SHOWING A COPY OF THE SIGNATURE AND IMPRESSION OF A PROFESSIONAL SURVEYOR'S SEAL IS PROVIDED FOR COURTESY PURPOSES ONLY AND SHALL NOT BE CONSIDERED AS THE ACTUAL SURVEY DOCUMENT. FLEIS & VANDENBRINK ENGINEERING, INC. IS NOT RESPONSIBLE FOR ANY UNAUTHORIZED USE, MISUSE OR COPY OF THIS DOCUMENT. THE ORIGINAL OF THIS DOCUMENT SHOWS THE RAISED STAMP AND HAS BEEN SIGNED USING BLUE INK.

EXISTING FEATURES LEGEND

SYMBOL	DESCRIPTION	SYMBOL	DESCRIPTION	LINES
	TREE (DECIDUOUS)		CABLE RISER	R.O.W. LINE
	BUSH		GAS RISER	PROPERTY LINE
	TREE (CONIFEROUS)		GAS VALVE	PLAT LINE
	DEAD TREE		UTILITY METER	WATERMAIN
	STUMP		TELEPHONE RISER	WATER SERVICE LEAD
	MANHOLE		TELEPHONE MANHOLE	SANITARY SEWER
	PUMP STATION MANHOLE		ELECTRICAL RISER	SANITARY SERVICE LEAD
	SANITARY CLEANOUT		ELECTRICAL MANHOLE	FORCE MAIN
	RD. CATCH BASIN		ELECTRICAL HANDHOLE	STORM SEWER
	SQ. CATCH BASIN		UTILITY POLE	CULVERT (21" AND UNDER)
	PIPE END		TELEPHONE POLE	CULVERT (24" AND UP)
	FIRE HYDRANT		YARD LIGHT	FIBER OPTIC
	WATER VALVE		GUY POLE	CABLE T.V.
	CURB STOP & BOX		GUY ANCHOR	TELEPHONE
	WELL		HAND HOLE	ELECTRIC
	WATER MANHOLE		PED CROSSING SIGNAL	GAS
	WATER METER		RAILROAD SIGNAL	OVERHEAD LINES
	MONITORING WELL		SIGN	GUARDRAIL
	FILL PORT		MAILBOX	FENCE
	ELECTRICAL OUTLET		GUARD POST	WOODLINE
	SOIL BORING		POST	LANDSCAPE
	FOUND CONC. MONUMENT		SPRINKLER VALVE	WETLAND
	FOUND IRON ROD		SPRINKLER HEAD	EDGE OF WATER
	SET IRON ROD		FLAG POLE	
	SURVEY CONTROL POINT		ROCK	
	SECTION CORNER		VENT	
	BENCHMARK		AC UNIT	
	UNDERGROUND UTILITY MARKER		ANTENNA	
			DOWN SPOT	

NOTE: ALL ITEMS LISTED ON THE LEGEND MAY NOT BE PRESENT ON DRAWING.

CITY OF ROYAL OAK, MI
ROYAL OAK, MI
5TH STREET IMPROVEMENTS
TOPOGRAPHIC SURVEY

DESIGN TEAM:
SJS, DPH
CHECK BY:

DRAWING INFORMATION:
858390_Topo
danielh

NOT FOR CONSTRUCTION

DECEMBER, 2022
F&V PROJECT NO.
858390



Know what's Below.
Call before you dig.